

OMS

Ocean Management Systems

Distributed by DUI

SIDE MOUNT ADAPTER OWNER'S MANUAL

OMS 2016©



INTRODUCTION

Thank you for choosing OMS.

The OMS Side Mount Adapter is a modular component for your OMS buoyancy compensators. The adapter brings full side mount functionality and value to your OMS buoyancy compensator by eliminating the need and expense of a dedicated side mount system. The OMS modular design approach gives you the flexibility and adaptability needed to meet the changing and evolving demands as your underwater exploration expands.

The OMS Side Mount Adapter was designed by demanding divers and built using rugged materials and robust construction ensuring years of underwater exploration. The OMS Side Mount Adapter is intended for use by individuals with experience and trained in side mount diving. Please read the manual and become familiar with the OMS Side Mount Adapter before use.

If the owner's manual is unavailable or lost, you can download a copy from the OMS Website at WWW.OMSDIVE.COM or a copy may be obtained by contacting OMS at:

OCEAN MANAGEMENT SYSTEMS GmbH
Klosterhofweg 96
Moenchengladbach 41199
Germany
+49 216 66 75411-30
Support@OMSDIVE.com
WWW.OMSDIVE.COM

OMS Equipment is Distributed By:

North, Central & South America, Australia,
Korea, New Zealand and Japan:

DIVING UNLIMITED INTERNATIONAL, INC.
1148 Delevan Drive
San Diego, CA 92102-2499 USA
+1 (619)236-1203 {800}325-8439
Support@DUI-Online.com
WWW.DUI-ONLINE.COM

Europe, Russia, Africa, India and
Southeast Asia:

BTS EUROPA AG
Klosterhofweg 96
Moenchengladbach 41199
Germany
+49 2166 6754110
Info@BtS-eu.com
WWW.BTS-EU.COM

TABLE OF CONTENTS

Technical Support	4
Safety	5
Intended Use and Applications for OMS Side Mount Adapters	7
General Precautions & Warnings	9
Introduction to OMS Side Mount Adapters	10
Assembly of OMS Rec Side Mount Adapter	12
Assembly of OMS Tec Side Mount Adapter	16
Pre-Dive Checks	24
Diving Considerations When Using the OMS Side Mount Adapter	24
Post Dive Maintenance	25
Optional Configurations with Back Mounted Tanks	26
Warranty and Limitation of Liability	27

TECHNICAL SUPPORT

If any portion of this manual is unclear, or if you are unable to obtain satisfactory answers from your dive center or instructor, contact

OCEAN MANAGEMENT SYSTEMS GMBH

Klosterhofweg 96

Moenchengladbach 41199

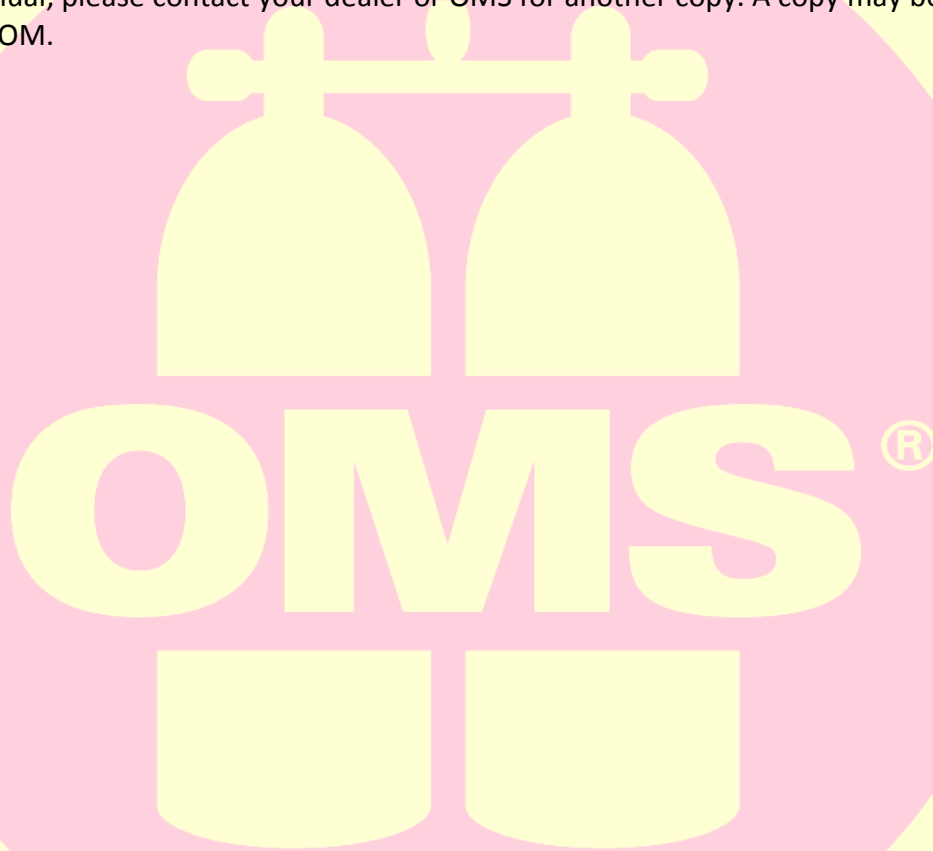
Germany

+49 2166 6754110

Support@OMSDIVE.com

WWW.OMSDIVE.COM

If you lose this manual, please contact your dealer or OMS for another copy. A copy may be downloaded at WWW.OMSDIVE.COM.



SAFETY

DEFINITION OF IMPORTANT SIGNAL WORDS USED IN THIS MANUAL

Throughout this manual we will use certain words to call your attention to conditions, practices, or techniques that may directly affect your safety. Pay particular attention to information introduced by the following signal words.

!!! DANGER !!!

Indicates an imminently hazardous situation which, if not avoided, will result in death or serious injury.

!! WARNING !!

Indicates a potentially hazardous situation which, if not avoided, can result in death or serious injury.

! CAUTION !

*Indicates a potentially hazardous situation which, if not avoided, may result in minor or moderate injury.
It may also be used to alert against unsafe practices.*

IMPORTANT SAFETY INFORMATION

- OMS Side Mount Adapters are intended for use by certified SCUBA divers who have successfully completed side mount training under the supervision of a qualified instructor.

!! WARNING !!

Follow all instructions and heed these safety precautions. Improper use or misuse of a buoyancy compensator equipped with a side mount adapter could result in serious injury or death.

!! WARNING !!

This owner's manual is NOT a substitute for instruction by a qualified instructor and training agency. DO NOT USE this equipment until you have practiced and mastered practical diving skills, including emergency skills, in a controlled environment under the supervision of a dive instructor, certified by a nationally recognized instructional organization and knowledgeable in the use of this type of equipment.

!! WARNING !!

!! WARNING !!

Improper use or misuse of this side mount adapter could result in loss of buoyancy control, including uncontrolled descents and uncontrolled rapid ascents, resulting in drowning, decompression sickness, or air embolism.

- A Buoyancy Compensator equipped with a OMS Side Mount Adapter does not qualify as a U.S. Coast Guard approved life jacket or life preserver. Do not depend upon this system to save your life under any circumstances. It is not designed to float you face up in the water if you are unconscious.

!!! DANGER !!!

This buoyancy compensator equipped with an OMS Side Mount Adapter will not float you face up if you are unconscious in the water. If you become unconscious on the surface while wearing this system you will drown if you are face down.

- You should be weighted to allow yourself to remain neutrally buoyant throughout all depths of your dive.
- Do not depend solely upon this buoyancy compensator to lift you to the surface. If it is damaged it may not hold air. In certain situations, dropping your weight belt or dropping a portion or all of the integrated weights may be the best method of establishing positive buoyancy to remain on the surface.
- Before every dive, inspect and test this buoyancy compensator for leakage. Leaks may not be apparent just by visually inspecting the buoyancy compensator. If the buoyancy compensator is damaged in any way, it must not be used until it is repaired.
- You should have the ability to use the oral inflation function of the power inflator to add air to the buoyancy compensator in the event the power inflator mechanism fails. This is a critical skill.
- Never over inflate the buoyancy compensator. Over inflation of the buoyancy compensator while you are underwater can cause you to experience a rapid ascent.

!! WARNING !!

Rapid ascents are dangerous and can lead to lung overpressure injuries and/or decompression sickness. Either of these conditions can cause serious injury or death.

- While using the Side Mount Adapter you must control your ascents and descents by adjusting your buoyancy. Be sure to follow the recommended ascent rate specified by the dive tables or dive computer you are using.
- If you are using a weight belt, it must have a clear drop path. If your buoyancy compensator is equipped with a crotch strap, the weight belt must be put on last. If you are using the integrated weight system, the weight pockets must be properly attached to the harness.
- Never use your buoyancy compensator to lift heavy objects underwater. The buoyancy compensator is not designed to be used for this purpose, whether or not you are wearing it. The buoyancy compensator is not a lift bag. If you are wearing the buoyancy compensator and have inflated it to lift a heavy object, if you drop the object the excess buoyancy may cause you to suffer a rapid ascent.

!! WARNING !!

Rapid ascents are dangerous and can lead to lung overpressure injuries and/or decompression sickness. Either of these conditions can cause serious injury or death.

- Do not attempt to breathe the air in the buoyancy compensator. The air in the wing may be contaminated with high levels of bacteria.
- The buoyancy compensator must be properly assembled and adjusted for you. If you disassemble the system to change components, and are unsure if you have properly reassembled it, see your OMS dealer to ensure that the buoyancy compensator is functioning correctly.

- You should never be weighted so heavily with your diving system that you cannot establish immediate positive buoyancy at the surface by ditching your weights. If your buoyancy compensator fails and you cannot establish positive buoyancy at the surface by ditching your weights alone, you may drown.
- Before each use, be sure to soak the tank bands in water before attaching the buoyancy compensator to the cylinder. After you have attached the tank bands to the cylinder, check the tension to ensure that the cylinder will not fall out of the bands. Tighten the bands as needed. Failure to follow this procedure can cause the cylinder to fall out of the bands, either underwater or on the surface. This can result in injury to you or to other divers close by.



INTENDED USE AND APPLICATIONS FOR OMS SIDE MOUNT ADAPTERS

OMS Side Mount Adapters are intended for use by certified SCUBA divers trained in side mount diving or individuals that are in training and are under the direct supervision of a certified instructor.

Side Mount Adapters are designed to perform the following functions:

- The OMS Side Mount Adapter is intended to be used in combination with a listed OMS buoyancy compensator wing. See table 1.
- The OMS Side Mount Adapter is intended to assist the diver in managing side mounted cylinder configurations.
- The OMS Side Mount Adapter still allows the buoyancy compensator to be used for surface flotation: By adding air to the buoyancy compensator with a Side Mount Adapter installed, you can establish positive buoyancy at the surface. This makes surface swimming much easier.

The OMS Side Mount Adapter does not change these basic buoyancy compensator functions:

- Assistance in Controlling Descents: By dumping or adding air to the buoyancy compensator you can help control your descent. You should never start a dive either excessively negatively buoyant or positively buoyant. Keep one hand on your power inflator mechanism continuously during the descent to help control your movement through the water column. Be prepared to add air to stop your descent.

!! WARNING !!

*Rapid descents are dangerous and can lead to pressure injuries and/or drowning.
Either of these conditions can result in serious injury or death.*

- Assistance in Establishing Neutral Buoyancy at Depth: You can establish neutral buoyancy at depth by adding just enough air to the buoyancy control system to allow you to hover. However, if you ascend or descend even a few feet, you may need to readjust the amount of air in the BC.
- Assistance in Controlling Ascents: Keep one hand on your power inflator/deflator mechanism continuously during the ascent to help control your movement through the water column. As the air expands inside the buoyancy compensator during the ascent you must be prepared to vent air in order to avoid a rapid ascent.

!! WARNING !!

The deflator must be the highest point in order to dump air properly. Not properly positioning the deflator can cause a rapid ascent which is dangerous and can lead to lung overpressure injuries and/or decompression sickness. Either of these conditions can cause serious injury or death.

GENERAL PRECAUTIONS & WARNINGS

- Before using this Side Mount Adapter (SMA), you must receive instruction and certification in SCUBA diving and buoyancy control and side mount training from a recognized training agency.
- Use of SCUBA equipment by uncertified or untrained persons is dangerous and can result in injury or death.
- Read this owner's manual completely before attempting to use your BC with the OMS Side Mount Adapter and become familiar with it first in a controlled environment such as a swimming pool. It is important to weight yourself properly and to become comfortable with using its many features and adjustments.
- Before every dive, perform a complete pre-dive inspection according to the procedure prescribed in this manual and your BC manual to ensure that all components are functioning properly and no signs of damage or leaks are present. If you find that your BC with the OMS Side Mount Adapter is not functioning properly or is damaged, remove it from service until it can be repaired.
- Your BC with OMS Side Mount Adapter is not a lift bag. Do not use it to bring heavy objects to the surface. Doing so may cause permanent damage to the BC with the OMS Side Mount Adapter and could also result in serious injury or death due to embolism or decompression sickness.
- The function of your BC with OMS Side Mount Adapter is to help you maintain neutral buoyancy while in a comfortably balanced, face-down swimming position underwater. It is also designed to provide you with flotation so that you can rest on the surface. It is not designed to function as a life preserver or personal flotation device (PFD).
- A BC with OMS Side Mount Adapter not a life jacket. It is not designed to provide face-up flotation in all situations, and therefore it does not meet U.S. Coast Guard regulations for a life preserver or personal flotation device (PFD).
- Read and be aware of all warning and precautions stated in this OMS Side Mount Adapter manual and in you BC manual.
- Have your OMS equipment inspected and serviced annually by an authorized OMS dealer or at any time you have any concerns about your equipment's function or condition.

INTRODUCTION TO OMS SIDE MOUNT ADAPTERS

- OMS Side Mount Adapters are built around a modular design that allows a diver to customize their system. Typically a complete system consists of a harness, wing, accessory pockets, and a method to attach cylinders.
- It is important for a diver to configure a system that fits properly and has enough lift to comfortably support the diver and cylinders at the surface.
- Tools and emergency items (marker buoys, signal devices, etc.) should be secured such that they are easily available yet do not pose an entanglement hazard to guidelines and mooring ropes. All this is possible with OMS products.

TYPES OF OMS HARNESES, SIDE MOUNT ADAPTERS AND WINGS

OMS HARNESS STYLES

DIR One Piece Harness

This simple harness with no sternum strap or shoulder release buckles is a minimal harness for maximum reliability. It is not ideal for use in a side mount configuration. Without a sternum strap the shoulder straps are not positioned ideally for holding the neck end of the cylinders close in to the sides of the body.

Comfort Harness II System

This is a full featured harness with side release buckles on both padded shoulder straps. This harness includes a sternum strap and adjustable D-ring attachment points.

IQ Backpack

This is a “soft pack” harness system that can be used as part of a light weight travel rig or can be fitted with a metal back plate for use with high capacity dual cylinders.

OMS SIDE MOUNT ADAPTERS

OMS offers two side mount adapters

1. Recreational or Rec Side Mount Adapter
 - a. PN 11518062 Rec Side Mount Black
 - b. PN 11518063 Rec Side Mount Red

The Rec Side Mount Adapter can be used with a wide range of OMS wings. See Table 1.

2. Technical or Tec Side Mount Adapter
 - a. PN 11518060 Tech Side Mount Adapter Black

b. PN 11518061 Tech Side Mount Adapter Red

The Tec Side Mount Adapter is designed for use with the OMS Tesseract Wing providing a compact profile side mount system capable of meeting the most demanding requirements.

OMS WINGS COMPATIBLE WITH OMS SIDE MOUNT ADAPTERS

Table 1

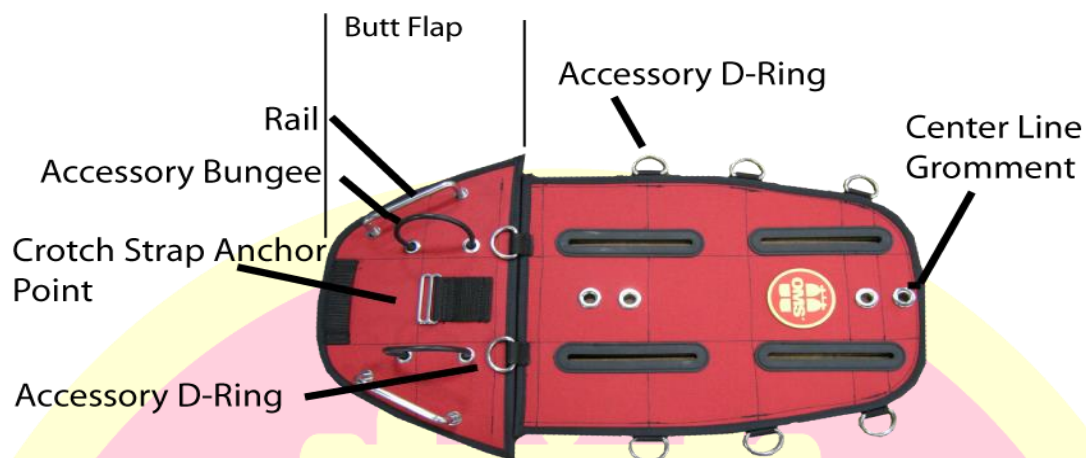
Side Mount Adapter

Wing	Rec Side Mount Adapter	Tec Side Mount Adapter
Deep Ocean	X	
Ocean		
Performance Double		
Performance Mono	X	
Tesseract	X	X



ASSEMBLY OF OMS REC SIDE MOUNT ADAPTERS

OMS Rec Side Mount Adapter



ASSEMBLY OF REC SIDE MOUNT ADAPTER ON AN OMS CONTINUOUS WEAVE (DIR) HARNESS OR OMS COMFORT HARNESS II™ SYSTEM OR EQUIVALENT BACKPLATE HARNESS WITH A BACK PLATE

ITEMS NEEDED

1. OMS Rec Side Mount Adapter
2. 2 ea OMS 18 mm Book Screws 11518050
3. Flathead screw driver
4. Optional: 1.5" crotch strap PN 11518075

STEP 1

Remove 2" (or 1.5") crotch strap from backplate harness and install it on side mount adapter.



STEP 2

Place side mount adapter on flat surface checking that the rails and OMS logo are facing down.



STEP 3

Place an 18 mm book screw through the second center line grommet down from the top of the adapter with threads facing up.

Repeat this process with the bottom centerline grommet.



STEP 4

Place the wing in position over the adapter aligning the screws through the appropriate center line grommets. Check that the cell is installed correctly by when the tops are aligned, the airway should come over the left shoulder. On all OMS air cells the warning label should be visible and the top of the label is to the top of the adapter.



STEP 5

Place the backplate in place taking care to align the screws through the appropriate center line openings on the backplate.



STEP 6

Install the book screw nut on the bottom screw first turning it one or two turns leaving it loose until the top nut is in place. Adjust the top nut finger tight. Then tighten down the lower nut.



STEP 7

Tighten both book screws with a screwdriver.



ASSEMBLY OF REC SIDE MOUNT ADAPTER ON AN IQ BACKPACK WITHOUT A BACK PLATE

ITEMS NEEDED

1. OMS Rec Side Mount Adapter
2. 2 ea OMS 22 mm Book Screws PN 11518077
3. OMS Crotch Strap, DIR 2" PN 11518059
4. Flathead screwdriver
5. Optional: 1.5" crotch strap PN 11518075

STEP 1

Remove the soft back pad and the 1" IQ Backpack crotch strap.

STEP 2

Install a DIR 2" (or 1.5") crotch strap to side mount adapter.



STEP 3

Do the same steps 2 through 7 of Assembly of Rec Side Mount Adapter on OMS Continuous Weave (DIR) Harness or OMS Comfort Harness II™ System or Equivalent Backplate Harness with a Back Plate using the IQ Backpack in place of a metal back plate.

STEP 4

Replace IQ Pack back pad.

ASSEMBLY OF REC SIDE MOUNT ADAPTER ON AN IQ BACKPACK WITH A BACK PLATE

ITEMS NEEDED

1. OMS Rec Side Mount Adapter
2. 2 ea OMS 22 mm Book Screws PN 11518077
3. OMS Crotch Strap, DIR 2" PN 11518059
4. OMS or equivalent metal backplate
 - a. Stainless PN 11518031
 - b. Aluminum PN 11518032
5. Flathead screwdriver
6. Option: 1.5" crotch strap PN 11518075

STEP 1

Do steps 1 & 2 for Assembly of Rec Side Mount Adapter on IQ Back Pack without a Back Plate.

STEP 2

Insert metal back plate into IQ Pack plate retainer sleeve.



STEP 3

Do steps 2 through 4 Assembly of Rec Side Mount Adapter on OMS Continuous Weave (DIR) Harness or OMS Comfort Harness II™ System or Equivalent Backplate Harness.

STEP 4

Because the 22 mm book screws are too short to fit through the complete assembly the nut will be installed to the back plate level.



STEP 5

Place the bottom book screw nut first and tighten down only one to two turns. This allows movement of the assembly and easier securing of the top screw. Reach up into the plate retainer sleeve place and tighten down the top book screw nut.



STEP 6

Tighten both book screws with a screwdriver.



ASSEMBLY OF OMS TEC SIDE MOUNT ADAPTERS

OMS TEC SIDE MOUNT ADAPTER AND TESSERACT WING

The Tec Side Mount Adapter is designed to be used in with the OMS Tesseract Wing. The primary and redundant airways on the Tesseract Wing are positioned on the right and left sides of the wing allowing the Tech Adapter to wrap over the top of the wing. This provides a low entanglement leading edge. In addition the Tesseract Wing's retraction bands can be re-threaded to make for a low entanglement back surface while keeping the wing from "tacoing" or folding up behind the diver.

Place the Tesseract Wing with the redundant airway (right) side clear of the top flap

The Tec Side Mount Adapter top flap should wrap over the top of the Tesseract Wing

The OMS Tesseract Wing primary and redundant inflators are offset on the sides providing clearance for the Tec Side Mount Adapter top flap to rap over the top of the wing.

The OMS Tesseract Wing is equipped with two epaulets on the right and left sides for threading the shoulder strap though.

The OMS Tesseract Wing is equipped with slots for threading the Tec Side Mount Adapter waist belt retainer straps.

This is a close up photo of the OMS Tesseract Wing shoulder strap epaulet for securing the top flap.

This is a close up photo of the OMS Tesseract Wing waist belt slot for securing the OMS Side Mount Adapter to waist belt.



Consideration to be Made Before Re-Threading the OMS Tesseract Wing Retraction Bands

Have some spare retraction bands before removing them from the OMS Tesseract Wing as some may be damaged in the process. The OMS Tesseract comes with 14 retraction bands and only seven are needed for the rethreading process. (The OMS Tesseract Wing comes with 5 spare retraction bands when purchased

www.omsdive.com

new.)

Additional sets of retractions bands are available for purchase OMS PN 11518053 OMS Silicon Retraction Bands 12 pc Set

RETHREADING THE OMS TESSERACT WING RETRACTION BANDS TO BE USED WITH THE OMS TEC SIDEMOUNT ADAPTER

STEP 1

The 14 retraction bands are removed and 7 are re-installed when using with the Tec Side Mount Adapter. The bands are rethreaded on the wing side next to the diver's back. This provides for a clean snag free surface on the back side of the wing. Check each removed retraction band for damage and do not use it if cut, nicked or broken. (14 bands are removed and only 7 are needed. Each Tesseract Wing comes with 6 spare.)



STEP 2

After the retraction bands are removed place the wing on a flat surface diver side up, warning label up.



STEP 3

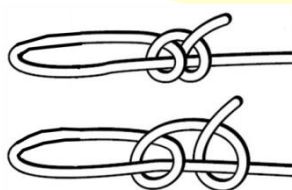
Routing of the seven retraction bands

Note: The wing is shown inflated to illustrate the routing. Be sure to fully inflate the wing before threading the retraction bands.

1. Tie bungee to grommet **A**
2. Tread bungee through grommet **B**
3. Pull bungee up through grommet **C**
4. Tie bungee to grommet **D**



How to tie the retraction band knots

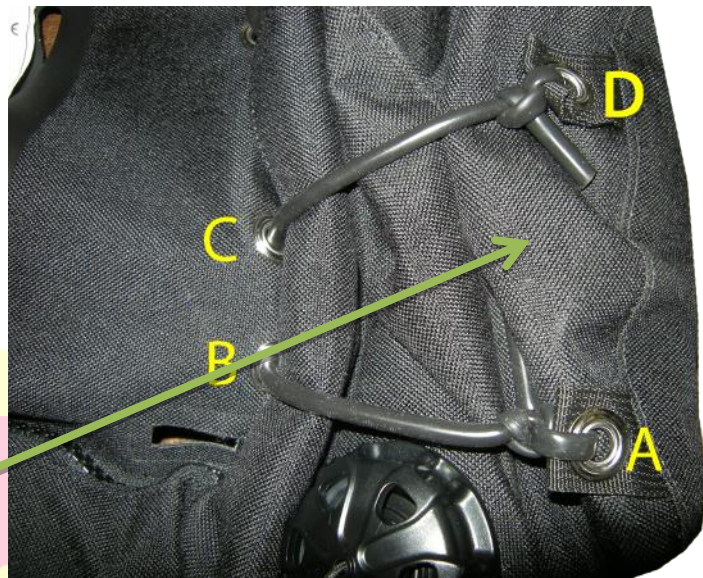


STEP 4

Repeat retraction band installation process six more times working around the wing - two outside grommets at a time.

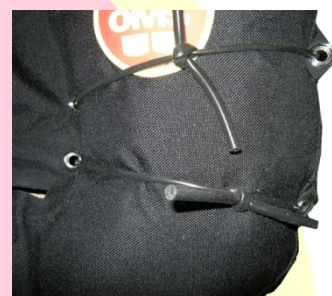
The wing must be fully inflated when attaching retraction bands. The cell is deflated in this photo only to clearly show the routing and knots.

Each knot should have a minimum of 1" tail visible and trailing from the knot. If more than a 1" tail is tied in to the first knot at A tying the second knot at D is difficult. This is only critical at the largest diameter portions of the wing.

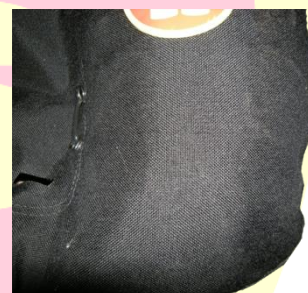


This is how the Retraction Bands look BEFORE and AFTER they are removed to rethread them for use with the Tec Side Mount Adapter

BEFORE: Retraction Bands Tank Side standard insulation visible on back side of wing when inflated.



AFTER: Retraction Bands that are reinstalled are not visible on the tank side of the wing when inflated. This provides a smooth, low entanglement surface. This also assists in keeping the wing from "tacoing" or folding up behind the diver.

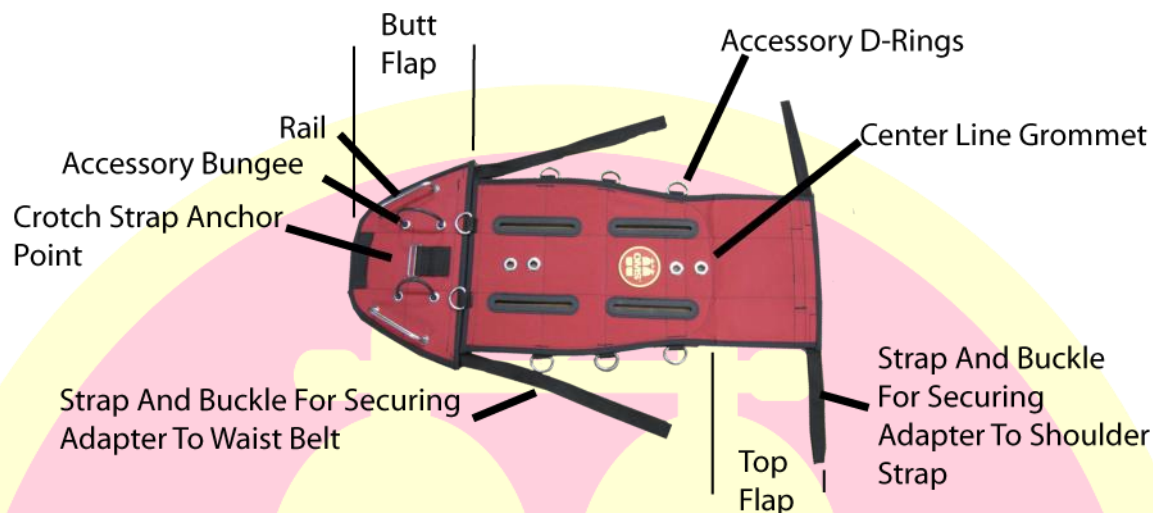


STEP 5

After fully inflating and then deflating the Tesseract wing check that all retraction band knots are secure and not slipping and that none of the retraction bands are preventing any portion of the wing from fully inflating.

ASSEMBLY OF TEC SIDE MOUNT ADAPTER ON AN OMS CONTINUOUS WEAVE (DIR) HARNESS OR OMS COMFORT HARNESS II™ SYSTEM OR EQUIVALENT BACKPLATE HARNESS WITH A BACK PLATE

OMS Tec Side Mount Adapter



Note: The DIR harness is not ideal for the use with the side mount adapter as the objective is to hold the side mounted cylinders close and parallel with the body. The DIR shoulder straps don't route along the front of the diver's chest which can cause the valves to drop down. The OMS Comfort Harness II is more ideal because the sternum strap pulls the shoulder straps in allowing the cylinders to lie parallel to the divers torso.

Items Needed

1. OMS Rec Side Mount Adapters
2. 2 ea OMS 18 mm Book Screws PN 11518050
3. Flathead screwdriver
4. Option: 1.5" crotch strap 11518075

STEP 1

Remove 2" crotch strap from backplate harness and install it (or 1.5") crotch strap on side mount adapter



STEP 2

Place side mount adapter on flat surface checking that the rails and OMS logo are facing down



STEP 3

Place an 18 mm book screw through the second center line grommet down for the top of the adapter with threads facing up. Repeat this process with the bottom centerline grommet.



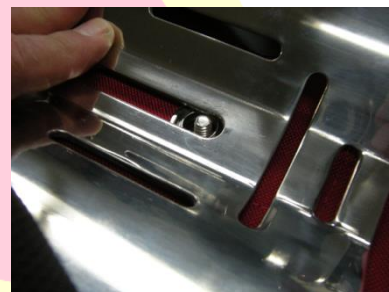
STEP 4

Place the wing in position over the adapter aligning the screws through the appropriate center line grommets. Check that the cell is installed correctly. With the top of the wing and Side Mount Adapter aligned at the top, the airway should be over the left shoulder. On all OMS wings the warning label should be visible and the top of the label is to the top of the adapter.



STEP 5

Place the back plate in place taking care to align the screws through the appropriate center line openings on the backplate.



STEP 6

Install the book screw nut on the bottom screw first turning it one or two turns leaving it loose until the top nut is in place and adjusted finger tight. Then tighten down the lower nut.



STEP 7

Tighten both book screws with a screwdriver.



ASSEMBLY OF A TEC SIDE MOUNT ADAPTER ON AN IQ BACKPACK WITHOUT A BACK PLATE

Items Needed

1. OMS Rec Side Mount Adapter
2. 2 ea OMS 22 mm Book Screws PN 11518077
3. OMS Crotch Strap, DIR 2" PN 11518059
4. Or option: 1.5" crotch strap PN 11518075
5. Flathead screwdriver

STEP 1

Remove back pad and the 1" IQ Backpack crotch strap.

STEP 2

Install DIR 2" (or 1.5") crotch strap to side mount adapter.



STEP 3

Do steps 2 through 7 of Assembly of Rec Side Mount Adapter on OMS DIR harness or OMS Comfort Harness II System or equivalent back plate harness using the IQ Back Pack in place of a metal backplate

STEP 4

Replace IQ Backpack back pad

Assembly of Rec Side Mount Adapter on IQ Backpack with a Backplate

Items Needed

1. OMS Rec Side Mount Adapter
2. 2 ea OMS 22 mm Book Screws PN 11518077
3. OMS Crotch Strap, DIR 2" PN 11518059
4. OMS or equivalent metal backplate
 - a. Stainless PN 11518031
 - b. Aluminum PN 11518032
5. Flat head screwdriver

STEP 1

Do steps 1 & 2 for Assembly of Rec Side Mount Adapter on IQ Backpack without a Back Plate

STEP 2

Insert metal backplate into IQ Pack plate retainer sleeve



STEP 3

Do steps 2 through 4 of Assembly of Rec Side Mount Adapter on OMS DIR Harness or OMS Comfort Harness II System or equivalent with a Back Plate

STEP 4

Because the 22 mm book screws are too short to fit through the complete assembly the nut will be installed to the back plate level.



STEP 5

Place the bottom book screw nut first and tighten down only one to two turns. This allows movement of the assembly and easier securing of the top screw. Reach up into the plate retainer sleeve, place and tighten down the top book screw nut.



STEP 6

Tighten both book screws with a screwdriver.



Step 7

Thread shoulder straps through the wing epaulets.



STEP 8

Secure the top flap straps around the shoulder straps.



STEP 9

Thread the two waist belt straps through the waist belt slots in the Tesseract Wing.



STEP 10

Route the waist belt strap under the waist belt and thread it back through the waist belt slot on the Tesseract Wing.



STEP 11

Secure the waist strap to the buckle on the Side Mount Adapter.



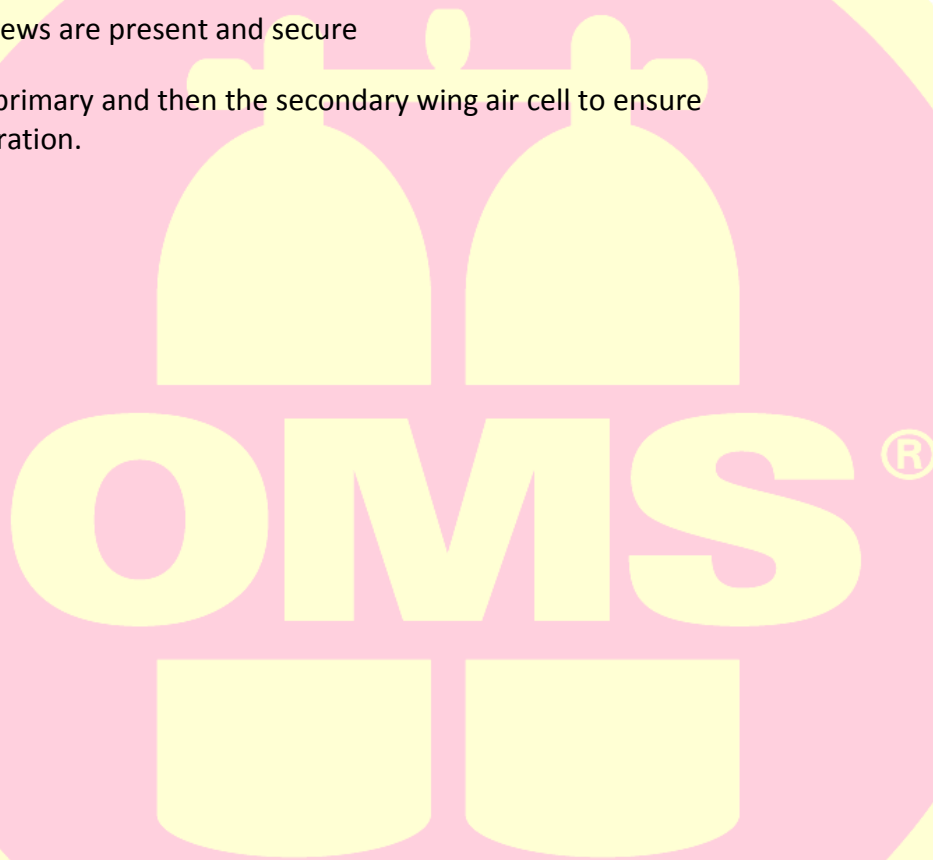
Tech Side Mount Adapter top flap wrapped around the top of the Tesseract Wing.



STEP 12

Inspect and check that the installation is correct:

1. The shoulder straps should be through the Tesseract Wing epaulets
2. The Side Mount Adapter Top Flap is secured to the shoulder straps
3. The Side Mount Adapter waist straps are treaded though holes in the Tesseract Wing and secured to the waist belt
4. The crotch strap is secured to the Side Mount Adapter butt flap and adjusted correctly
5. All book screws are present and secure
6. Inflate the primary and then the secondary wing air cell to ensure proper operation.



PRE-DIVE CHECKS

- Check that required book screws are in place and are tight
- Check all fittings and connections for damaged components (cracks, tears, etc.)
- Inflate each BC until the dump valve vents, leave inflated for 30 minutes.
- On dual bladder models test each bladder separately (do not inflate both bladders at the same time).
- With the BC fully inflated check that pull dump cord or folds in the BC are not trapped by the retraction bands
- Check the security of the weight systems before entering the water.
- After entry, visually inspect the unit for bubbles indicating leaks.
- Tests pull dumps for smooth operation and positive seal.

DIVING CONSIDERATIONS WHEN USING THE OMS SIDE MOUNT ADAPTER

!! WARNING !!

This owner's manual is NOT a substitute for instruction by a qualified instructor and training agency. DO NOT USE this equipment until you have practiced and mastered practical diving skills, including emergency skills, in a controlled environment under the supervision of a dive instructor, certified by a nationally recognized instructional organization and knowledgeable in the use of this type of equipment.

- Inflate the BC with short controlled bursts of air by pressing the inflate button.
- The unit can be inflated orally through the oral inflator. Depress the deflate button completely and exhale into the oral inflator.
- On dual bladder models, the bladder against the diver's back is the primary bladder. Do not inflate both bladders at the same time. This could decrease the overall lift provided by the jacket.
- Deflate the jacket by pressing the deflate button on the inflator or by pulling a pull dump. Use proper descent techniques taught in scuba training.

!! WARNING !!

Repeated improper use of the Oral Inflation/ Deflation mechanism or dump valves assemblies may allow water to enter the BC with a subsequent reduction in buoyancy. Reduced buoyancy can cause a loss of buoyancy control resulting in PERSONAL INJURY OR DEATH

POST DIVE MAINTENANCE

- Connect the inflator to an air supply to pressurize the inflator mechanism then use a garden hose to direct fresh water into the oral inflator while pressing the deflate button.
- Partially inflate the unit and allow the water to wash around the interior of the bladder.
- Drain completely and store partially inflated away from temperature extremes and direct sunlight.
- Do not attempt to service a malfunctioning piece of equipment. Take it to an authorized OMS dealer for repair.

OPTIONAL CONFIGURATIONS WITH BACK MOUNTED TANKS

Both the Rec and Tec Side Mount Adapter can be used in the following additional configurations assuming the wing in use is appropriate for the application:

1. Twin back mounted tanks: The Side Mount adapter is placed in the assembly between the Wing and tanks and is held in place by the twin tank bolts (see BC manual).
2. Single back mounted tank: OMS DIR and Comfort Harness II: Use OMS Single tank adapter (Not needed if using the OMS Performance Mono Wing). Cam Bands can be threaded through the back plate air cell and the Side Mount Adapter slots (see BC manual)
3. OMS IQ Backpack without a back plate: Use two Cam Bands and thread them through the slots provided. Note: It is best to put the assembly together with book screws as outlined in this manual before installing the Cam Bands (see BC manual).
4. OMS IQ Backpack with back plate: See 2 DIR and Comfort Harness II

WARRANTY AND LIMITATION OF LIABILITY

Ocean Management Systems (OMS) warrants that your BCD will be free from defects in materials and workmanship for a period of two (2) years from the date of original retail purchase.

OMS warrants that Weight & Trim Systems, Glove Systems and other accessories will be free from defects in materials and workmanship for a period of one (1) year from the date of original retail purchase with proof of purchase.

Any product determined by OMS to be defective in materials or workmanship in accordance with the above warranties will be repaired or replaced at the option of OMS, free of charge, when received at BtS Europa AG or Diving Unlimited International, Inc. freight prepaid, together with proof of purchase. The original warranty date applies regardless of whether the item is repaired or replaced.

This warranty is expressly in lieu of all other warranties. Any implied warranties of merchantability or fitness for a particular purpose are limited to the same duration as this express warranty.

This warranty does not cover, and OMS shall not be liable for incidental or consequential damages. Some states do not allow the exclusion or limitation of implied warranties, incidental or consequential damages, so the above limitations and exclusions may not apply to you.

This warranty does not cover fading or any damage resulting from misuse, abuse, neglect, alteration, failure to perform maintenance as instructed, damage caused by contaminants, or unauthorized repair or service.

This warranty does not cover any representation or warranty made by dealers beyond the provisions of this warranty.

This warranty does not cover costs incurred for normal repair, inspection and preventative maintenance.

This warranty is a consumer warranty extended only to the original retail purchaser, and does not apply to equipment used for commercial purposes.

You must establish proof of purchase to obtain warranty service or replacement.

This warranty gives you specific legal rights, and you may also have other rights which vary from state to state.

OCEAN MANAGEMENT SYSTEMS GmbH
Klosterhofweg 96
Monchengladbach 41199
Germany
WWW.OMSDIVE.COM

For service contact:

North America, South America, Australia,
Korea, New Zealand and Japan:

Europe, Russia, Africa and
Southeast Asia:

DIVING UNLIMITED INTERNATIONAL, INC.
1148 Delevan Drive
San Diego, CA 92102-2499 USA
+1 (619)236-1203 {800}325-8439
Support@DUI-Online.com
WWW.DUI-ONLINE.COM

BTS EUROPA AG
Klosterhofweg 96
Moenchengladbach 41199
Germany
+49 2166 6754110
Info@BtS-eu.com
WWW.BTS-EU.COM

