

**DIVING UNLIMITED
INTERNATIONAL**



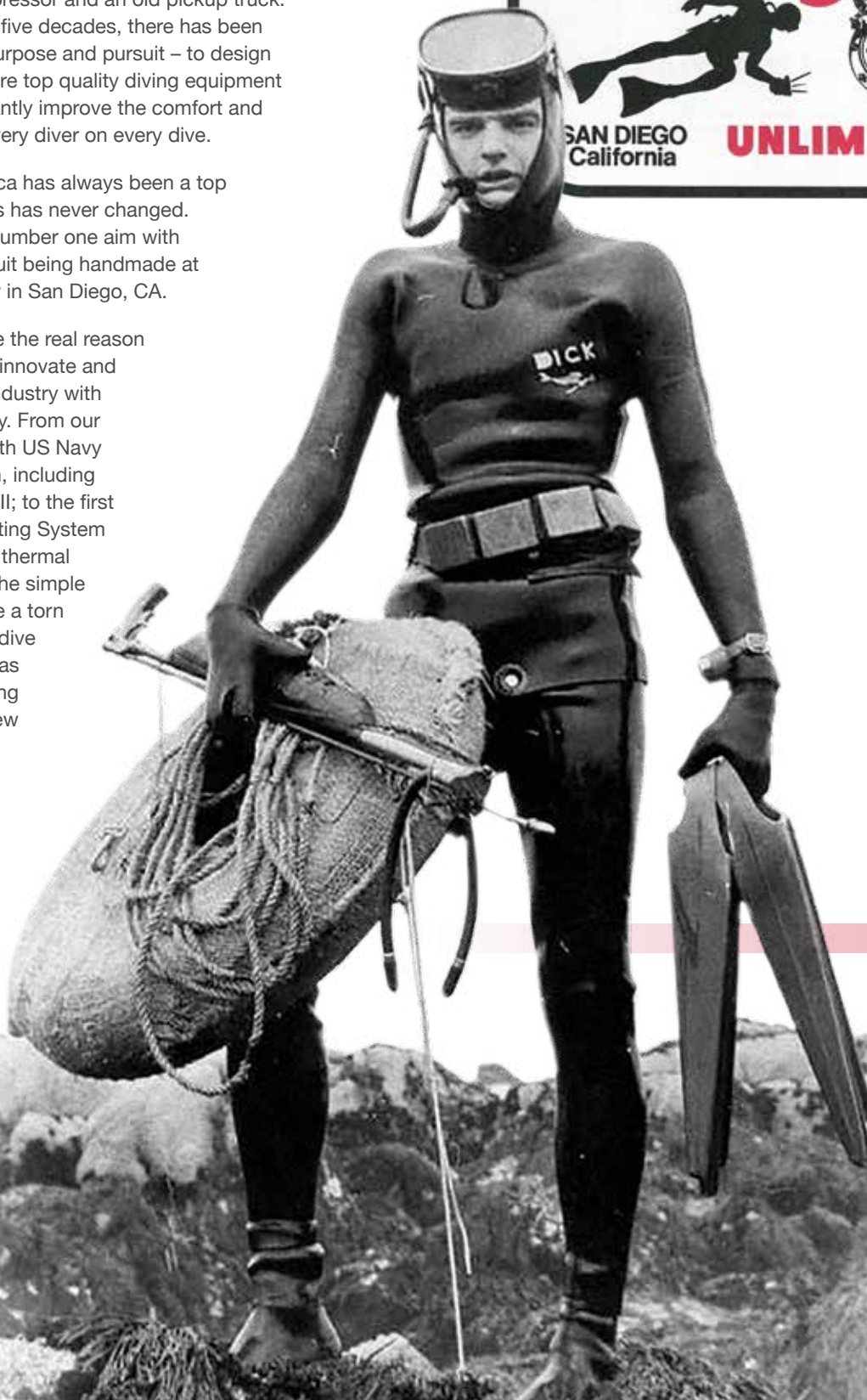
BY DIVERS. FOR DIVERS.

LEGACY OF FIRSTS

It began 1963 in La Mesa, CA, when Dick Long (NAUI Instructor 49), DUI's owner and founder, started Skin Diving Unlimited with two company assets: a compressor and an old pickup truck. Spanning over five decades, there has been but one sole purpose and pursuit – to design and manufacture top quality diving equipment that will constantly improve the comfort and capability of every diver on every dive.

Made in America has always been a top priority and this has never changed. Quality is our number one aim with each DUI Drysuit being handmade at the DUI factory in San Diego, CA.

DUI "Firsts" are the real reason we continually innovate and lead the dive industry with new technology. From our involvement with US Navy diving research, including SeaLab II and III; to the first Hot Water Heating System for deep water thermal protection; to the simple need to replace a torn seal while at a dive location, DUI has a legacy of being the first with new innovations.



LEGACY OF INNOVATION

28 US AND INTERNATIONAL PATENTS

Research and development leads the way. In our single-minded pursuit for high performing and innovative products, DUI has always believed there must be a continual and strong commitment to Research and Development. This dedication has helped establish a lengthy legacy of innovations and firsts that became pioneering changes in modern diving. DUI holds 28 US and International patents on technologies that have revolutionized diving. Here are a few key DUI design patents...



1970'S

- Heated Underwater Diving Suit
- Hot-Water System for Divers
- Deep Sea Speech Converter

1980'S

- Self-Donning / Telescoping Torso Suit
- Air Inlet Valve for Drysuits
- Crushed Neoprene Drysuit Material

1990'S

- Diver's Weight and Trim System
- RockBoots™

2000'S

- Diver Replaceable ZipSeals™
- Easy Access Diagonal Torso Drysuit Zipper



WHY DIVE DRY?

WARMTH is a key factor affecting comfort. Science has proven that a diver loses body heat 25 times faster in water than air. Unless you're diving in 98.6°F water, every diver loses warmth in a wetsuit. Drysuits made from the right materials, coupled with proper insulation, reduce or eliminate the effects of cold on a diver's body.

COMFORT is a desire of all divers. Wetsuits can be uncomfortably snug and inhibit movement. Why dive outside your comfort zone and risk the enjoyment of your dive experience? A properly fitting drysuit constructed from quality materials can greatly enhance your comfort in all diving conditions.

ENJOYMENT can be greatly enhanced when a diver doesn't worry about their comfort or the cold. A drysuit reduces fatigue, which contributes to less air consumption and longer dives – and greater enjoyment.

DUI 1963



WHY DIVE DUI?

FIT

is what divers tell us matters the most in a great drysuit experience. No other drysuit maker comes close to the wide range of patterns and measurements DUI offers to make a diver comfortable. But the patterns alone aren't enough, fabric options also contribute to the fit factor. When a diver needs a wide range-of-motion for filming, photography, or flexibility for cave diving, DUI is the best choice. DUI drysuits show up more than any other maker on diving TV specials or IMAX films. DUI drysuits are used by many elite military teams. DUI is the overwhelming choice for diving professional and is a great choice for all levels of recreational divers.

INNOVATION

is another key reason to choose DUI. As an exclusive designer and manufacturer of drysuits since 1963, that's over 55 years of specialized focus on innovative drysuit technology! DUI holds 28 US and international patents on technologies that have revolutionized diving.

SUPPORT

Excellent Warranty and Ease of Service, is a critical demand of divers. DUI receives accolades from all over the world for outstanding customer service. The industry-leading DUI 7-Year Limited Warranty with a proven track record on our premium drysuits, gives a diver peace of mind and long-term enjoyment.





STANDARD DRYSUIT

DUI Standard Drysuits offer excellent value and quality at an affordable price. Each suit has an innovative design and ZipSeals™.

COST EFFECTIVE

Get a high quality, world renowned DUI drysuit at a price point you will love.

WIDE RANGE OF MATERIALS

Offering three different types of Standard Drysuits in three different materials. These suits are perfect for travel, warm-water diving, and some of the most adverse conditions with our new trilaminate HD material.

CUSTOM AND SELECT FIT

All Standard Drysuits come in Select Sizing for Men and Women. The Yukon II and Cortez are also available in Signature Sizing using 20 measurements and other variables to get a drysuit that is tailored specifically for you.

SEAM TAPING

DryFusion heat taped seam sealing is the industry standard for sealing drysuit seams. It is applied in a single layer and is lightweight and flexible. DUI's taped seams last longer than other drysuit brands and methods.

PLASTIC ZIPPER

YKK Plastic Zippers are flexible, light weight and require minimal maintenance.

FREEDOM FORM™

The Yukon II and Cortez have a distinctive new inlay design that provides an unrestricted range of motion to maximize comfort and flexibility, while maintaining a streamlined form in the arms. The diamond crotch panel has proven to minimize wear from walking and dive systems that have crotch straps.

3 YEAR WARRANTY

The Standard Drysuit includes a three year warranty against defects in workmanship and material with the DUI reputation to back it up. This warranty exceeds industry standards.

ZIPSEALS™

All DUI drysuits are available with our innovative ZipSeals™ technology. ZipSeals allow you to change your seals in minutes so you never miss a dive along with the ability to switch between seal and glove types.

STANDARD
DRYSUIT





The Cortez front-entry drysuit is DUI's latest addition to the Standard drysuit line and most exciting. **It offers the highest durability in our standard drysuit line with our new trilaminate HD material.** Since the development of the original self-donning telescopic torso in the 1980's we have continued to push the limits of drysuit manufacturing and performance. This distinctive new inlay design provides an unrestricted range of motion to maximize comfort and flexibility, while maintaining streamlined form. This new design, paired with the rip-stop nylon / butyl rubber / polyester trilaminate, provides unparalleled flexibility and durability. In addition to attached UltraFlex boots, the Cortez ships standard with two large Cargo pockets comprised of 2 interior compartments: 1 large section is a perfect fit for a spare mask and the thinner pocket is ideal for wet-notes along with an external zippered pocket.

- Latex wrist ZipSeals
- Latex neck G2 ZipSeals
- Trilaminate material made from rip-stop nylon / butyl rubber / polyester with double coated seams
- YKK plastic waterproof zipper
- Warm neck collar
- 2 Cargo pockets (3 compartments + 6 bungee tethers)
- Self-donning telescoping torso
- Suspenders and crotch strap
- Apeks swivel inlet and adjustable, automatic exhaust valves
- 36" Miflex inflator hose with over-sized quick disconnect
- Internal waist adjustment cord
- UltraFlex™ Boots
- DryFusion Taped Seams
- Available in Black with Green stitching
- Mid-range MSRP
- Drysuit bag

WARRANTY

- Three years for defects in materials and workmanship
- One year for the zipper, valves, and boots
- 90 days for the seals

AVAILABLE SELECT SIZES OR CUSTOM SIGNATURE

- Men's: 15 Select Sizes or Custom Size
- Women's: 18 Select Sizes or Custom Size

MEN'S SUIT SIZE	S	M	ML	L	XL	XXL
ULTRA FLEX BOOT SIZE	M	L	N/A	XL	2XL	3XL
WOMEN'S SUIT SIZE	S	M	ML	L	XL	XXL
ULTRA FLEX BOOT SIZE	S	M	M	L	XL	2XL



DURABILITY 8.5

FLEXIBILITY 8.5



STANDARD
DRYSUIT

YUKON //

New in 2019 DUI now offers a custom fitted Yukon II using our 20 measuring points. **The Yukon II is a front-entry drysuit which showcases DUI's newest innovation – FreedomForm™ Technology.** Since the development of the original self-donning telescopic torso in the 1980's we have continued to push the limits of drysuit design and manufacturing. This distinctive new inlay design provides an unrestricted range of motion to maximize comfort and flexibility, while maintaining streamlined form. This new design paired with the nylon / butyl rubber / polyester trilaminate provides unparalleled flexibility. In addition to attached UltraFlex boots, the newest boot technology where durability meets flexibility, the Yukon II ships standard with a large Cargo pocket complete with 2 interior compartments: 1 large section is a perfect fit for a spare mask and the thinner pocket is ideal for wet-notes along with an external zippered pocket.

- Latex wrist ZipSeals
- Latex neck G2 ZipSeals
- Trilaminate material made from nylon / butyl rubber / polyester with double coated seams
- YKK plastic waterproof zipper
- Warm neck collar
- Cargo pocket on right thigh (3 compartments + 6 bungee tethers)
- Self-donning telescoping torso
- Suspenders and crotch strap
- Apeks swivel inlet and adjustable, automatic exhaust valves
- 36" Miflex inflator hose with over-sized quick disconnect
- Internal waist adjustment cord
- UltraFlex™ Boots
- DryFusion Taped Seams
- Available in Black/Black, Black/Red, or Black/Gray
- Mid-range MSRP
- Drysuit bag

WARRANTY

- Three years for defects in materials and workmanship
- One year for the zipper, valves, and boots
- 90 days for the seals

AVAILABLE SELECT SIZES OR CUSTOM SIGNATURE

- Men's: 15 Select Sizes or Custom Size
- Women's: 18 Select Sizes or Custom Size

MEN'S SUIT SIZE	S	M	ML	L	XL	XXL
ULTRA FLEX BOOT SIZE	M	L	N/A	XL	2XL	3XL
WOMEN'S SUIT SIZE	S	M	ML	L	XL	XXL
ULTRA FLEX BOOT SIZE	S	M	M	L	XL	2XL



STANDARD
DRYSUIT

DURABILITY 7.5

FLEXIBILITY 8.5





SUIT SIZE	S	M	L	XL	2XL
SOCK SIZE	M	L	XL	2XL	3XL

Made with lightweight and breathable fabric, the Coronado is an ideal choice for any diver who values comfort at an attractive price. Weighing less than a 5mm wetsuit, **the Coronado is an ideal travel solution.** Coming with many features and its affordable price this drysuit brings the comforts and benefits of diving warm and dry to all.

- Latex wrist ZipSeals
- Latex neck G2 ZipSeals
- Lightweight breathable / waterproof trilaminate material with M3 technology
- YKK plastic waterproof zipper
- Self-donning telescoping torso
- Suspenders and crotch strap
- Apeks swivel inlet and adjustable, automatic exhaust valves
- 36" Miflex inflator hose with over-sized quick disconnect
- Internal waist adjustment cord
- 1000 denier Cordura® waterproof drysuit sock (no charge for size change)
- DryFusion Taped Seams
- Available in Black or Gray
- Low to mid-range MSRP
- Attached dry socks that will comfortably fit with wetsuit boots or drysuit boots.
- Drysuit bag

WARRANTY

- Three years for defects in materials and workmanship
- One year for the zipper, valves, and sock
- 90 days for the seals

AVAILABLE SIZES

- Men's: 15 Select Sizes



DURABILITY 7

FLEXIBILITY 9



STANDARD
DRYSUIT





PREMIUM DRYSUIT

DUI Premium Drysuits set the bar for quality, performance, longevity and overall value. Carefully made by hand in San Diego with first class materials, craftsmanship and ZipSeals™.

INDUSTRY BENCHMARK

DUI Premium Drysuits are the best drysuits made in the industry. Experienced divers who know their equipment recognize that DUI premium drysuits have a much broader capability and will last for many years when properly cared for. The suits represent a high commitment to diving and are usually purchased by the discriminating diver that wants the best. These drysuits have the highest quality and performance.

SUPERIOR MATERIALS

DUI Premium Drysuits come in four different materials. Each has different durability and weight. We have cycle tested numerous materials and know how long it will take for each to break down under various wear conditions. We have chosen only the toughest and most comfortable to be utilized in our designs. This equates to maximum longevity and reliability for years of diving.

3-LAYER URETHANE SEAM COATING

DUI's unique hand applied, three-layered urethane seam sealing system has stood the test of time. Many DUI suits in the field have lasted longer than 20 years. No other seam construction technique is as secure. This process is covered under DUI's 7-year warranty and will not peel or crack in extreme cold or heat.

SEAM STYLE

DUI utilizes a fold-over, double stitch type seam on all Premium fabric Drysuits. It is a four-layer lock stitch that is 'self healing' and will not unravel even if threads are broken. This is one of the strongest and most durable stitch types and will not rip or tear over time.

CUSTOM FIT AND DESIGN

Available in Signature Custom Fit or 15 Select Sizes for Men and 18 Select Sizes for Women. DUI uses 20 measurements with our own proprietary software to design your made-to-measure drysuit. We have been making custom drysuits for over thirty years and DUI guarantees fit. Create your own personal design by choosing your overlay style and color, accessories, and customizations such as color stitching and personal patches.

YKK BRASS ZIPPER

The YKK brass zipper is stronger and lasts longer than any other waterproof zipper in the market. With proper care a YKK brass zipper will last longer than plastic.

7 YEAR WARRANTY

We are so confident in our construction design and manufacturing techniques that we warrant our Premium Drysuits for seven years against defects in workmanship and material.

ZIPSEALS™

All DUI drysuits are available with our innovative ZipSeals™ technology. ZipSeals allow you to change your seals in minutes so you never miss a dive along with the ability to switch between seal and glove types.

PREMIUM
DRYSUIT



TLS350™

Excellent for sport and performance divers, this drysuit has set the industry standard for what divers have come to expect from a drysuit.

Durable, fast drying and lightweight for travel. **The TLS350 is so versatile that it has become the primary choice for underwater photographers, deep cave explorers, and the US Coast Guard Helicopter Rescue Swimmers.** By varying the insulation, you can use this suit in the warm waters of Florida and the ice-covered seas of Antarctica.

DUI Premium Drysuits set the bar for quality, performance, longevity and overall value. Made by hand with first class materials, craftsmanship and ZipSeals™.

- Drysuit fabric is a trilaminate material made of nylon / butyl rubber / nylon
- Diagonal front-entry zipper
- Self-donning telescoping torso
- Suspenders and crotch strap
- Apeks swivel inlet and adjustable, automatic exhaust valves
- Delrin zipper guard
- Warm neck collar
- Internal waist adjustment cord
- Double layer material over knee area for extra durability
- 36" Miflex or rubber inflator hose with over-sized quick disconnect
- Drysuit bag and ZipStick™
- Liquid seam sealing
- Available in Elite, Pro, or Pro Stripe overlay patterns
- Available boot options include waterproof Neoprene socks with RockBoots, UltraFlex, Turbo, or TurboTec Boots.

WARRANTY

- Seven years for defects in materials and workmanship
- One year for the zipper, valves, and boots
- 90 days for the seals

AVAILABLE SELECT SIZES OR CUSTOM SIGNATURE

- Men's: 15 Select Sizes or Custom Signature
- Women's: 18 Select Sizes or Custom Signature



DURABILITY 8.5

FLEXIBILITY 9



PREMIUM
DRYSUIT

FLX EXTREME™

The FLX EXTREME, is perfect for advanced technical divers and the most popular option for exploration divers.

We set out on a mission to develop the most comfortable and flexible drysuit to provide maximum protection for technically demanding conditions. In that mission we discovered the perfect combination of materials and craftsmanship. The trilaminate fabric has an inner and outer layer of polyester with a heavier layer of butyl rubber than the TLS. This heavier layer adds additional puncture resistance. We then add 1000 denier Cordura® overlays on the legs for increased durability, remaining soft to the touch and feeling just like your favorite pair of jeans.

- Drysuit fabric is a trilaminate material made of polyester / butyl rubber / polyester in black
- Diagonal front-entry zipper
- Self-donning telescoping torso
- Suspenders and crotch strap
- Apeks swivel inlet and adjustable, automatic exhaust valves
- Delrin Zipper guard
- Warm neck collar
- Internal waist adjustment cord
- 1000 denier Cordura® material over knee area for extra durability
- 36" Miflex or rubber inflator hose with over-sized quick disconnect
- Drysuit bag and ZipStick™
- Liquid seam sealing
- Available in Elite, Pro, or Pro Stripe overlay patterns
- Available boot options include waterproof Neoprene socks with RockBoots, UltraFlex, Turbo, or TurboTec Boots.

WARRANTY

- Seven years for defects in materials and workmanship
- One year for the zipper, valves, and boots
- 90 days for the seals

AVAILABLE SELECT SIZES OR CUSTOM SIGNATURE

- Men's: 15 Select Sizes or Custom Signature
- Women's: 18 Select Sizes or Custom Signature



PREMIUM
DRYSUIT

DURABILITY 9

FLEXIBILITY 8



CLX450™

A world class suit developed for overhead environments requiring durability, the CLX450 incorporates rugged materials tough enough to crawl through narrow restrictions. The CLX450 provides a quick dry upper body made of a heavy duty blend of Cordura®, butyl rubber, and Polyester. **Technical divers following the rule of thirds require a drysuit designed for the best fit with ballistic abrasion resistance.** To provide optimal freedom of movement while finning, this suit is constructed with a more flexible polyester trilaminate lower half. Fondly referred to as the “Tuxedo of Drysuits,” the CLX450 is tailored to meet the demands of performance divers.

- Upper body
 - Trilaminate material made of Cordura® / butyl rubber / polyester
- Bottom
 - Trilaminate material made of polyester / butyl rubber / polyester
- Diagonal front-entry zipper
- Self-donning telescoping torso
- Suspenders and crotch strap
- Apeks swivel inlet and adjustable, automatic exhaust valves
- Delrin zipper guard
- Warm neck collar
- Internal waist adjustment cord
- Knee reinforcement - double layer material over knee area for extra durability
- 36" Miflex or rubber inflator hose with over-sized quick disconnect
- Drysuit bag and ZipStick™
- Liquid seam sealing
- Available in Elite, Pro, or Pro Stripe overlay patterns
- Available boot options include waterproof Neoprene socks with RockBoots, UltraFlex, Turbo, or TurboTec Boots.



DURABILITY 9.5

FLEXIBILITY 7

WARRANTY

- Seven years for defects in materials and workmanship
- One year for the zipper, valves, and boots
- 90 days for the seals

AVAILABLE SELECT SIZES OR CUSTOM SIGNATURE

- Men's: 15 Select Sizes or Custom Signature
- Women's: 18 Select Sizes or Custom Signature



PREMIUM
DRYSUIT

CF200X™

With a proven record of performance and durability, the CF200 is the drysuit choice for technical and professional divers in demanding conditions around the world.

As pioneers in exposure protection, DUI discovered the advantages of crushing neoprene and then developed and refined their patented process. Although many others claim the benefits of compression, DUI is the only manufacturer which has truly perfected the art of crushed neoprene.

The lack of bubbles in our crushed neoprene suits, as well as the abrasion and puncture resistance of the material makes it the most durable material used in the construction of drysuits today. **Dive for dive, the craftsmanship and innovation utilized in each and every CF200 make this the least expensive suit per dive to own.**

- Drysuit fabric is patented crushed neoprene – 3mm neoprene with a heavy-duty nylon shell crushed to approximately 1mm thickness in black
- Formfitting suit due to 4-way stretch material
- Diagonal front-entry YKK metal waterproof zipper
- Available in self-donning telescoping torso or shoulder entry
- Suspenders and crotch strap
- Apeks swivel inlet and adjustable, automatic exhaust valves
- Delrin zipper guard
- Warm neck collar
- CF200 knee pads
- 36" Miflex or rubber inflator hose with over-sized quick disconnect
- Drysuit bag and ZipStick™
- Liquid seam sealing
- Available boot options include waterproof Neoprene socks with RockBoots, UltraFlex, Turbo, or TurboTec Boots.

CF200SE

- See options above
- Does not include overlay color
- Shoulder Entry zipper

WARRANTY

- Seven years for defects in materials and workmanship
- One year for the zipper, valves, and boots
- 90 days for the seals

AVAILABLE SELECT SIZES OR CUSTOM SIGNATURE

- Men's: 15 Select Sizes or Custom Signature
- Women's: 18 Select Sizes or Custom Signature



PREMIUM
DRYSUIT

DURABILITY 10

FLEXIBILITY 10



FABRIC OVERLAY COLORS

TOUGH DUCK

- Black Tough Duck
- Burgundy Tough Duck
- Charcoal Tough Duck
- Midnight Blue Tough Duck
- Orange Tough Duck
- Purple Tough Duck
- Red Tough Duck
- Royal Blue Tough Duck
- Sand Tough Duck

LIMITED EDITION TOUGH DUCK

- LE Black and White Digi Camo
- LE Black and White Dog Paws
- LE Black and White Geo Check
- LE Black Multi
- LE Black with White Skulls
- LE Blue with White Stars
- LE Blue Camo
- LE Chicklets
- LE Leopard
- LE Pink Camo
- LE Pink Tie Dye
- LE Purple Flames
- LE Tiki Blues
- LE Turquoise and Lime Reflections
- LE Universal Camo
- LE Woodland Camo
- LE Zebra

CORDURA®

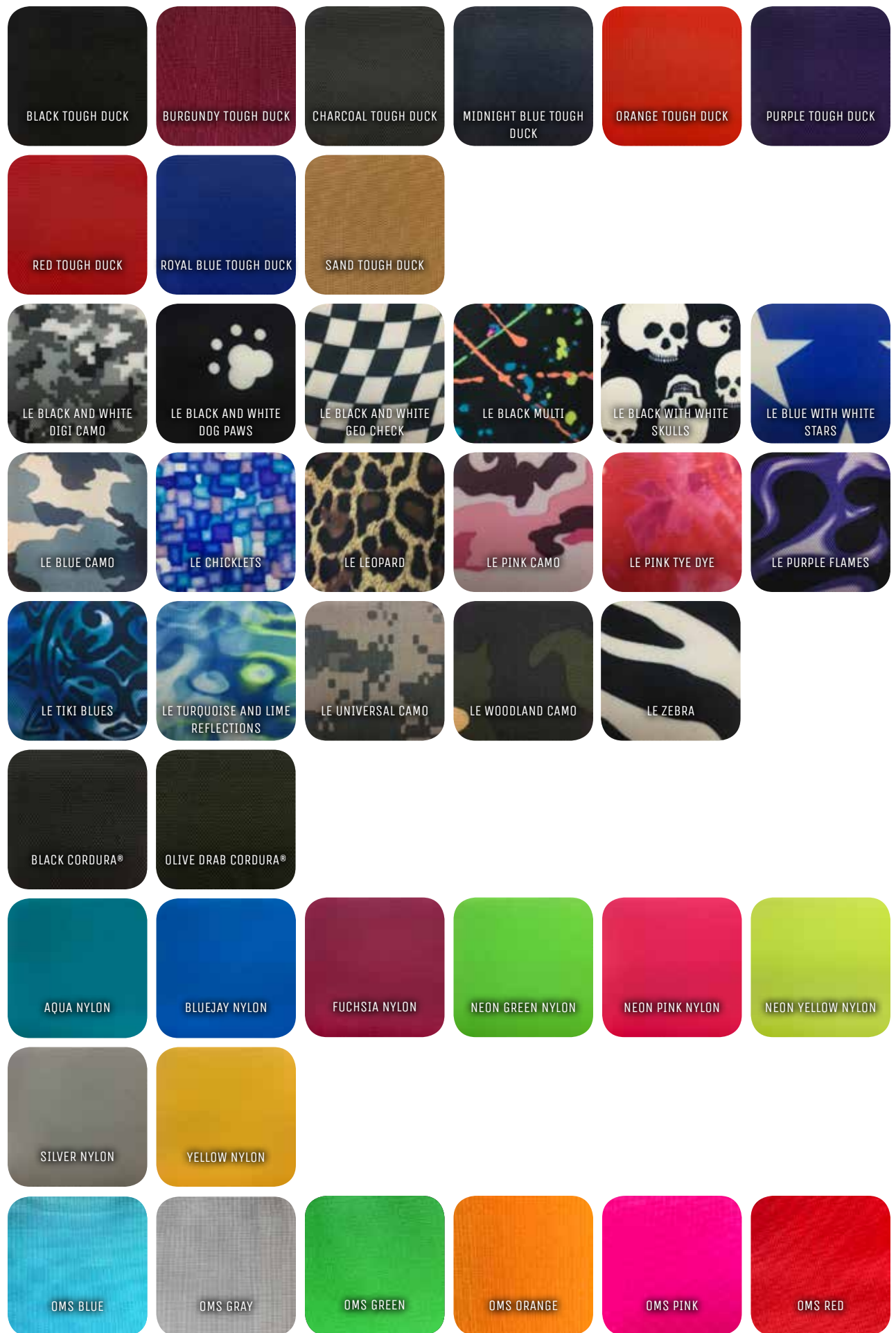
- Black Cordura®
- Olive Drab Cordura®

NYLON

- Aqua Nylon
- Bluejay Nylon
- Fuchsia Nylon
- Neon Green Nylon
- Neon Pink Nylon
- Neon Yellow Nylon
- Silver Nylon
- Yellow Nylon

OMS CORDURA®

- OMS Blue
- OMS Gray
- OMS Green
- OMS Orange
- OMS Pink
- OMS Red



CUSTOMIZATION

ACCENT PIPING

(FOR ELITE DESIGN ONLY)

PIPING COLORS

1. Neon Pink
2. Red
3. Fuchsia
4. Neon Green
5. Bluejay
6. Purple
7. Gray
8. White
9. Royal Blue
10. Yellow
11. Neon Yellow
12. Black
13. Orange
14. Navy Blue
15. Aqua
16. Neon Orange



CUSTOMIZATION

DESIGN YOUR DRY SUIT ONLINE AT
MYDRYSUIT.DIVEDUI.COM

STRIPES AND THREADS

STRIPE COLORS

Choose up to 3 stripes and don't be afraid to mix and match!

1. Black
2. White
3. Red
4. Aegean
5. Silver



THREAD COLORS

1. Yellow Green
2. Neon Green
3. Yellow
4. Gold
5. Red
6. Purple
7. Aqua
8. Pink
9. Olive
10. Royal Blue
11. Burgundy
12. Silver
13. Neon Pink
14. Midnight Blue
15. Orange
16. Fuchsia
17. White
18. Black



CUSTOMIZATION

DESIGN YOUR DRYSUIT ONLINE AT
MYDRYSUIT.DIVEDUI.COM

OVERLAY OPTIONS

PREMIUM DRYSUIT

- Available for TLS350, FLX EXTREME, and CLX450

ELITE



PRO



CUSTOMIZATION

PRO STRIPE



CUSTOMIZATION

SEAL OPTIONS

DUI's ZipSeals™ have revolutionized the exposure protection market by allowing divers to easily self-repair a seal that has been damaged in a very short time. Imagine planning a dive trip to a different place in a faraway land and while suiting up, you rip one of your wrist seals. Once upon a time this would have potentially dampened a dive adventure.

With ZipSeals in your save-a-dive kit you can easily save your trip in a matter of a few minutes. ZipSeals are like having dive insurance so that you will never miss a dive due to seal failure.

ZIPSEALS™

The ultimate dive insurance. Never miss a dive again! All Premium DUI drysuits include patented DUI ZipSeals™ that allow you the ability to change out a wrist seal in minutes or remove your ZipSeals and switch to ZipGloves™ for the warmest hands you've ever had.

FEATURES

- Available in silicone and latex
- Great for divers with prominent wrist tendons, creating a drier dive when flexing hands
- Silicone seals are easy to put on and take off due to excellent stretch and coating applied to the inside of the seal

SILICONE ZIPSEALS™



LATEX ZIPSEALS™ WITH A CORDURA® NEOPRENE CUFF

LATEX ZIPSEALS™



G1 NECK SEAL



G2 NECK SEAL

STANDARD



HEAVY DUTY



ZIPGLOVES™

ZipGloves™ can be attached to any DUI drysuit with ZipSeals™. Simply remove the wrist ZipSeals from your suit and replace it with a DUI ZipGloves. For optimal thermal insulation, a liner (included) is worn on your hand to keep them warm.

FEATURES

- Excellent for underwater photographers and divers seeking superior dexterity
- Wrist strap to assist and control airflow into glove to loft the liner
- Available in 3 styles (Heavy Duty, Maximum Dexterity, and Heavy Duty WD)

HEAVY DUTY

- With Liners
- Sizes M - XL



MAXIMUM DEXTERITY

- With Liners
- Sizes S - XL



HEAVY DUTY WD

- With Wrist Dam Inside
- With Liners
- Sizes M - XL



DRYSUIT
ACCESSORIES



DUI HOODS

- Are made with high quality superior stretch neoprene for ultra comfort.
- A Self-Venting Drysuit Hood.
- Large face seal for warmth (11mm includes extra large face seal)
- Strategically placed seams for more durability comfort.
- 4mm skirt for easy tucking into the warm neck collar with binding (Ultra)
- Optional color overlay upgrade

ULTRA SHORT 7MM

- Sizes: XS - XXL

WARM NECK ULTRA 7 MM

- Sizes: XS - XXL

WARM NECK ULTRA 11 MM

- Sizes: XS - XXL



WARM NECK ULTRA 7MM



ULTRA SHORT 7MM



ULTRA 11MM

BOOT OPTIONS

Since the beginning, DUI has been pushing the limits to develop the best drysuit boot options, capable of superior durability, support, and traction while still enabling an easy finning movement. From the early introduction of TurboBoots™ in 1970's, RockBoots™ in 1990's, the TurboTec™ boots in early 2000's, and with the recent introduction of the Ultraflex Boots, we are continually improving our range of boot options.

DRYSUIT
ACCESSORIES

ULTRAFLEX BOOTS™

This unique proprietary tread-grip evolved from the ever-popular RockBoots. A 3 mm neoprene boot with rubber reinforcements at the toes, ankle, and heel. The upper FastStrap allows for a snug and secure fit above the ankle to allow for optimal flexibility. The UltraFlex boots are an excellent choice for the diver that wants a little *more support than the TurboBoots, but have greater flexibility than the RockBoots.*



ROCKBOOTS™

A heavy-duty neoprene sock is attached to the drysuit and a DUI RockBoots™ is worn over the top. This style is especially popular for people who do a lot of walking and/or beach diving as it provides *superior ankle support, traction, and durability, but isn't stiff.*



TURBO BOOTS™

These boots are attached directly to the drysuit with a sneaker-type sole and ankle straps. These are preferred by divers who like the convenience of having the *boots built-in or who want the maximum ankle flexibility for finning.*



TURBOTEC™ BOOTS

Upgrade Available.

Made with DuPont™ Kevlar® Fiber fortified TurboBoots™ for reinforcement for abrasion resistance. *Very popular for exploration divers.*

ADD-ONS

DUI Provides the Greatest Number of Custom Options

POCKET

Constructed with heavy-duty 1000 denier Cordura®.
Available in 2 Sizes.

ZIPPERED POCKET

- Stiffener added for one-handed use underwater
- Two-way zippers
- Large D-ring for tying off accessories
- Small 6" x 6"
- Large 6" x 9.6"
- Custom color overlay available



CARGO UTILITY POCKET

- Large main pocket and slate pocket
- Two large tie-off bungee
- Velcro closure
- Low profile zipper flap pocket with small bungee
- Small 5.5" x 9"
- Large 7.5" x 11"
- Add custom Cargo flap overlay color



ZIPSTICK™

Protect your investment! The best way to protect your waterproof brass zipper is to keep it lubricated.



DUI P-VALVE

Balanced. Easy to Sanitize. Bayonet mount ensures sure fit.



OMS P-VALVE

Balanced. Easy to Sanitize. Bayonet mount ensures sure fit. Removable and includes Blanking Plug.



REINFORCEMENT

- Available in aramid fiber, CF200™, and 1000 denier Cordura®
- Made with DuPont™ Kevlar® fiber

CF200™ CROTCH PAD



CF200™ BUTTOCKS PAD



ARAMID FIBER BUTTOCKS PAD

- Made with DuPont™ Kevlar® fiber



ARAMID FIBER KNEE PAD

- 17.5" (44.5cm)
- 13.5" (34.3cm)
- Made with DuPont™ Kevlar® fiber



CF200™ KNEE PAD

- 17.5" (44.5cm)
- 13.5" (34.3cm)



ARAMID FIBER ELBOW PAD

- 7" (17.9cm)
- Made with DuPont™ Kevlar® fiber



CF200™ ELBOW PAD

- 7" (17.9cm)



WEIGHT & TRIM

Get the weight off your back and increase your diving comfort with the DUI Weight & Trim™ System. The harness allows you to comfortably wear up to 40 lbs and lets you adjust the weights up and down, forward and back so you can put your weights right where you want them.

WEIGHT & TRIM III HARNESS SYSTEM

- DUI's patented System uses a pull-handle system that secures the weight pockets. A large, easy grip handle can be pulled to dump the weights.
- The diver can dump half of the weights at a time
- As the weights are on a lanyard, once the handle is pulled, the weights can be held away from the body
- Easy replacement of the weight pocket with our new quick release system.
- Weight pods can be installed on any 2" webbing.
- New design holds shoulder straps close to the nape of the neck, contouring the harness and keeping the weight distributed comfortably.
- High visibility pull handles are easy to spot in low visibility and at night.
- Small Pockets - 20lbs System (10lbs on each side)
- Large Pockets - 40lbs System (20lbs on each side)
- Harness Sizes: S - L

WEIGHT & TRIM III BC SYSTEM

The Weight and Trim III System can be integrated into any BC System with a 2" waist band.

- Small Pockets - 20lbs system (10lbs on each side)
- Large Pockets - 40lbs system (20lbs on each side)



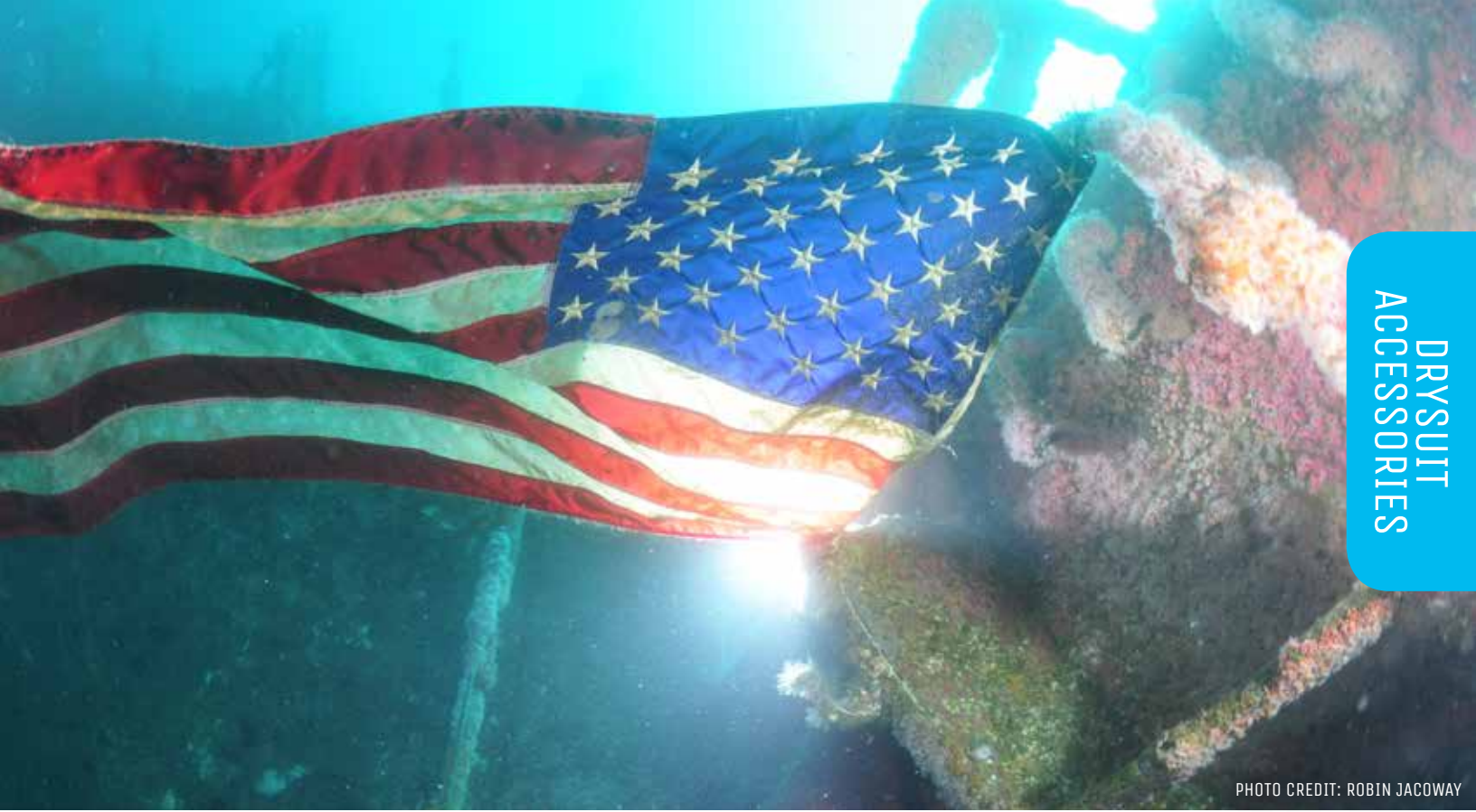


PHOTO CREDIT: ROBIN JACOWAY



WEIGHT & TRIM CLASSIC SYSTEM

- DUI's patented System uses a pull-cord system that secures the weight pockets. A large, easy grip handle can be pulled to dump the weights.
- The diver can dump half of the weights at a time
- As the weights are on a lanyard, once the handle is pulled, the weights can be held away from the body
- The DUI Weight and Trim System can be worn under most Buoyancy Compensator Device's, and is perfect for both wetsuit and drysuit diving.
- Large Pockets - 40lbs system (20lbs on each side)
- Sizes: S - L



PUBLIC SAFETY

DUI Public Safety products are designed to offer the Public Safety Diver the highest level of exposure protection for the specified mission in a comfortable, size-friendly drysuit. We pride ourselves on assisting Public Safety Dive Teams to make the best educated decision based on permeation and abrasion resistance needed for their operations. The DUI line offers products for moderate and high levels of contamination in surface and dive operations.

MISSION FOCUSED

DUI Public Safety drysuits are designed for the spectrum of operations undertaken by Public Safety Divers. Materials, suit components and standard accessories have all been carefully selected to maximize the drysuits' durability, utility and safety.

CUSTOM AND SELECT FIT

All Public Safety drysuits come in Select Sizes for men and women, as well as Signature Sizing for a personalized, tailored fit.

WARRANTY

DUI's standard 7-year warranty on materials and workmanship applies for the PS TLS and H2O Ops, and a 3-year warranty on the CXO.

ZIPSEALS™

All DUI drysuits are available with our innovative ZipSeals™ technology. ZipSeals allow you to change your seals in minutes so you never miss a dive along with the ability to switch between seal and glove types.



CX0100™

The ultimate suit for contaminated water diving. Designed to be part of a system that completely encapsulates the diver, the CXO Drysuit is quickly becoming the standard for Contaminated Extreme Operations for Public Safety Diving. The unique features of this drysuit include a high grade lightweight, durable polyurethane laminated fabric on the inside as well as the outside making it easy to decontaminate contaminated water valves, and the ability to be made-to-measure. In the industry our suits last longer than others in the market. The CXO is on the US Navy's Approved for Military Use (AMU) list for contaminated water diving.

- Drysuit fabric is a trilaminate material made of polyurethane laminated fabric ASTM. F739-07 in black and red with polyurethane on the inside as well as outside
- Metal shoulder-entry zipper with polyurethane backing that holds up longer against contaminants than standard waterproof zippers.
- Contaminated Water Apeks swivel inlet valve and adjustable, automatic exhaust valves with dual fluorosilicone diaphragms
- Telescoping torso and suspenders
- Reinforced double layer at the knees, waist, and shoulders
- ZipSeals™ on the neck with latex neck / hood combination or the helmet yolk (fits Kirby Morgon KM37)
- Sealed on inside and outside, best in industry for protecting divers.
- DuoTherm 300 Hood Liner
- ZipGloves™ with wrist dam and liners
- 36" rubber inflator hose with over-sized quick disconnect
- Drysuit bag and ZipStick™
- Includes Sock with RockBoots



DURABILITY 9

FLEXIBILITY 7



WARRANTY

- Three years for defects in materials and workmanship
- One year for the zipper, valves, and boots
- 90 days for the seals

AVAILABLE SELECT SIZES OR CUSTOM SIGNATURE

- Men's: 15 Select Sizes or Custom Signature

H2O OPERATIONS™

The first drysuit to address that breathable fabrics should not be used for certain surface operations. Breathable fabric drysuits DO NOT protect operators against waterborne contaminants. In addition to protecting operators from contaminants, **the H2O Dual Operations Drysuit is truly unique as it is designed to provide one suit to meet two different missions: dive and surface mode.** Surface operations can include swift and flood water rescue and dive missions. The fabric is durable yet lightweight and easy to decontaminate.

- Trilaminar material made of nylon / butyl rubber / nylon in black, yellow, or orange
- YKK Metal diagonal front-entry zipper
- YKK Metal waterproof relief zipper
- Self-donning telescoping torso
- Crotch strap and suspenders
- Internal waist adjustment cord
- Double thickness aramid fiber knee and shin pads
- Aramid fiber elbow pads and buttocks pad
- Installation of Team Patch on either shoulder (must be included with order)
- Drysuit bag and ZipStick™
- Liquid seam sealing
- Available boot options include Sock with RockBoots, UltraFlex, Turbo, or TurboTec Boots
- Comes with leg cuffs
- Comes with reflective tape

DIVE MODE

- Latex neck ZipSeals™
- Latex wrist ZipSeals™
- Apeks swivel inlet and adjustable, automatic exhaust valves
- 36" rubber inflator hose with over-sized quick disconnect

SURFACE MODE

- Adjustable NeoSplash™ neck ZipSeals™
- NeoSplash™ wrist ZipSeals™
- Two blanking plugs to replace valves when in surface mode

DUAL MODE

- Includes Dive Mode and Surface Mode options listed above

WARRANTY

- Seven years for defects in materials and workmanship
- One year for the zipper, valves, and boots
- 90 days for the seals

AVAILABLE SELECT SIZES OR CUSTOM SIGNATURE

- Men's: 15 Select Sizes or Custom Signature



PUBLIC SAFETY

DURABILITY 8.5

FLEXIBILITY 7.5

Surface Mode Pictured



PUBLIC SAFETY TLS™

The DUI Public Safety TLS350 Drysuit is the most popular drysuit for contaminated water diving. The slick outer surface material is easier to decontaminate and the butyl rubber membrane protects against contaminants. Easy to don and has excellent mobility from lighter weight material. Dive Teams can customize their suits with high visibility overlays, reflective tape, team patches and more. Available in a surface configuration along with a fully encapsulated diving configuration.

- Drysuit fabric is a trilaminate material made of nylon / butyl rubber / nylon in black
- Diagonal front-entry zipper
- Telescoping torso, crotch strap and suspenders
- Apeks swivel inlet and adjustable, automatic exhaust valves and 36" inflator hose
- Internal waist adjustment cord
- Double layer material over knees, shoulders, buttocks, and arms for extra durability and visibility
- Installation of team patch on left arm (must be included with order)
- 36" rubber inflator hose with over-sized quick disconnect
- Drysuit bag and ZipStick™
- Liquid seam sealing
- Available boot options include Sock with RockBoots, UltraFlex, Turbo, or TurboTec Boots.

WARRANTY

- Seven years for defects in materials and workmanship
- One year for the zipper, valves, and boots
- 90 days for the seals

AVAILABLE SELECT SIZES OR CUSTOM SIGNATURE

- Men's: 15 Select Sizes or Custom Signature



DURABILITY 8.5

FLEXIBILITY 8



LATEX NECK HOOD COMBO

- Worn by divers to keep dry or for contaminated water conditions.
- Should be worn with a hood liner
- Size small and large – one size fits most



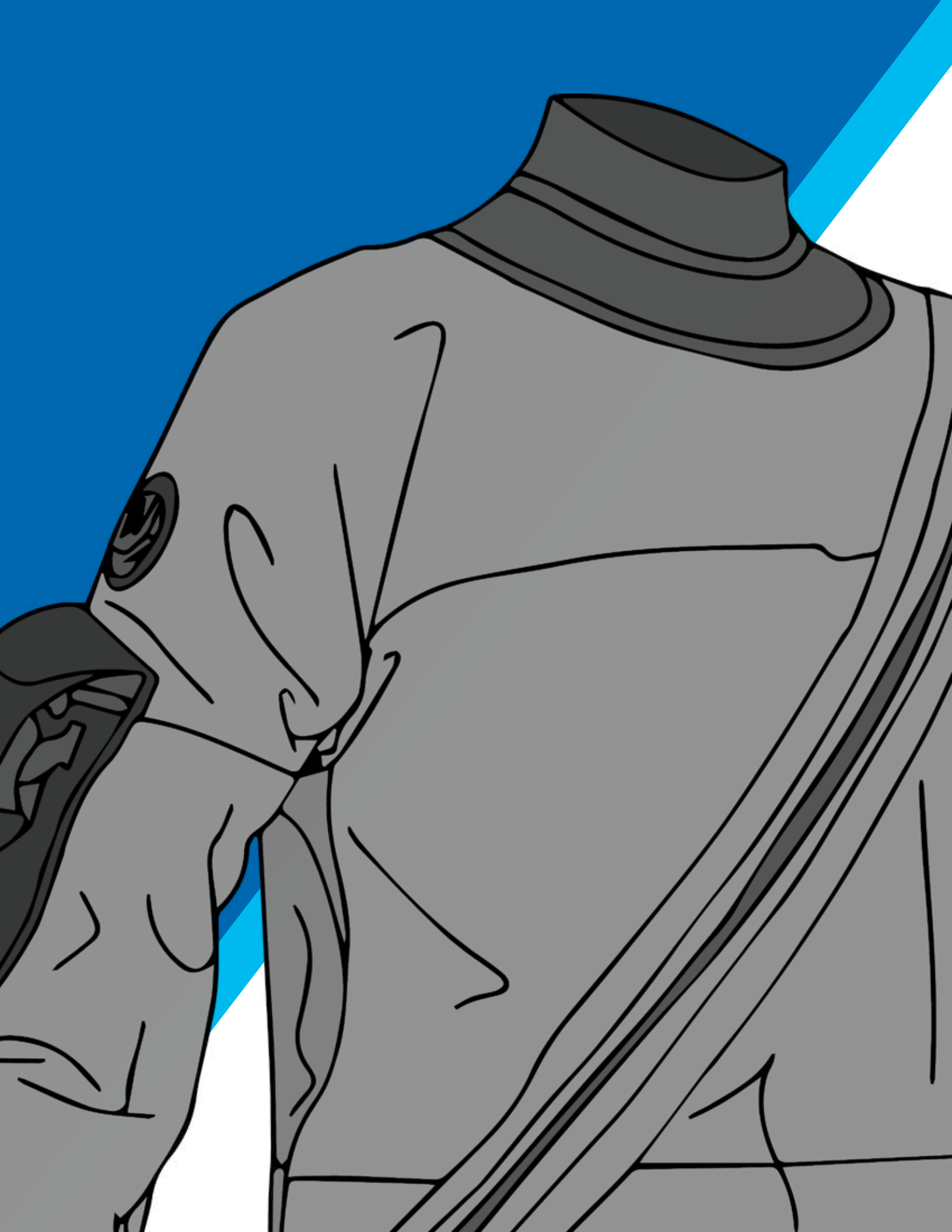
ZIP SEAL G1 NECK
LATEX HOOD COMBO



ATTACHED LATEX HOOD



ZIP SEAL G2 NECK
LATEX HOOD COMBO



DUI MILITARY

DUI takes great pride in its long association working with and supporting our US Military's diving needs. This relationship began in the 1960's with DUI's Founder, Dick Long, working directly with the UDT community in their wetsuit design to improve their working time underwater. It has continued and evolved through the decades, with DUI's pioneering contributions in saturation diving and development of the US Navy's first Passive and Active Diving Thermal Protection System. Today, this association continues with DUI's mission specific military drysuits and waterproof bags used by elite special operations divers and surface rescue swimmers.

DUI's military products, hand-made at our factory in San Diego, California, continue the long tradition of excellence and commitment to quality, performance and support of our military divers and operators.



DUI MILITARY



CLX450 MILITARY

This rugged drysuit utilizes a heavy duty quick dry upper body comprised of a heavy-duty blend of Cordura® / butyl rubber / polyester. Designed to exceed the performance requirements set by military working divers who require the best fit and most ballistic abrasion resistance possible.

DUI's also has a non-magnetic version of the CLX450 and is the official drysuit used by US Navy EOD divers. Other configurations of the suit are in active use with US Army Combat Divers, US Army Corps of Engineers and USN Salvage Operations Divers.

WORKING DRYSUIT

- Trilaminare material made of Cordura® / butyl rubber / polyester
- Diagonal front-entry zipper
- Self-donning telescoping torso
- Crotch strap and suspenders
- Apeks swivel inlet and adjustable, automatic exhaust valves
- Delrin zipper guard
- Warm neck collar
- Two pockets of choice
- Internal waist adjustment cord
- Knee Reinforcement - double layer material over knee area for extra durability
- Aramid fiber knee pads
- Relief zipper
- Drysuit bag and ZipStick™
- Liquid seam sealing
- Available boot options include Sock with RockBoots, SuperFlex, UltraFlex, Turbo, or TurboTec Boots.
- Non-magnetic version available
- Custom configurations available on request



EOD NON-MAGNETIC DRYSUIT

- Non-magnetic main and relief zipper, inlet and exhaust valves, inflator hose, and pockets
- Valve blank in chest

WARRANTY

- Seven years for defects in materials and workmanship
- One year for the zipper, valves, and boots
- 90 days for the seals

AVAILABLE SELECT SIZES OR CUSTOM SIGNATURE

- Men's: 15 Select Sizes or Custom Signature

EOD Non-Magnetic Pictured



AAOPS TYPE IV

AIR AMPHIBIOUS OPERATIONS

Designed for extended use in and around the water. **Whether boat operations or surface swims, this waterproof breathable PTFE membrane suit will keep you dry, comfortable and protected on the surface.** High wear area (shoulder, waist, hips, knees, and buttocks) has 3 layers of material, breathable material / 1000 denier Cordura® material / breathable material. The 3 layers makes the drysuit stronger but less flexible and breathable.

- Latex or splash ZipSeals™ neck and wrist seal
- Warm neck collar and zipper guard (Type IV only)
- Relief zipper
- 2 large DUI zippered 1000 denier Cordura® pockets (optional)
- Aramid fiber knee and buttocks pad (optional)
- NSN's assigned
- Heavy duty 1000 denier Cordura® socks and RockBoots
- Drysuit bag and ZipStick™
- Custom configurations available on request

COLOR OPTIONS

- Gray, Black, or Woodland Camouflage
- Custom colors available upon request

WARRANTY

- Three years for defects in materials and workmanship
- One year for the zipper, valves, and boots
- 90 days for the seals

AVAILABLE SELECT SIZES OR CUSTOM SIGNATURE

- Men's: 15 Select Sizes or Custom Signature

AAOPS TYPE I

High wear area (shoulder, waist, hips, knees, and buttocks) has double layer of material. The double layer makes the drysuit lightweight and more flexible and breathable.



AAOPS Type IV Pictured

SEAL TLS™

- Black Nylon trilaminate with Black 1000 denier Cordura® Overlays at shoulders and buttocks
- Diagonal front-entry zipper (self-donning)
- Patented telescoping torso, suspenders, and crotch strap
- Warm neck collar and zipper guard
- Latex neck and wrist ZipSeals™
- Relief zipper
- A flexible urethane ZipRing™ installed on the drysuit fits divers of all sizes
- OPTION: ZipGloves™
- Aramid fiber knee pads
- Heavy duty 1000 denier Cordura® socks with RockBoots
- Swivel inlet and adjustable automatic exhaust valve with inlet hose
- Large bellows or Cargo pocket with D-ring
- 1000 denier Cordura® zipper pocket with D-Ring
- Strobe pocket
- 36" Miflex or rubber inflator hose with over-sized quick disconnect
- Drysuit bag and ZipStick™
- Custom configurations available on request

AVAILABLE IN MULTIPLE CONFIGURATIONS

- Diving, Surface, or SDV
- GSA Advantage

WARRANTY

- Seven years for defects in materials and workmanship
- One year for the zipper, valves, and boots
- 90 days for the seals

AVAILABLE SELECT SIZES OR CUSTOM SIGNATURE

- Men's: 15 Select Sizes or Custom Signature



COAST GUARD RESCUE SWIMMER TLS™

RESCUE SWIMMER TLS

The DUI USCG TLS is the exclusive drysuit used by the U.S. Coast Guard Rescue Swimmers. **Made from rugged yet lightweight nylon trilaminate material, this suit is perfect for swimming.** For high visibility, this suit is configured with international orange and yellow with SOLAS reflective tape.

- Attached latex neck and wrist seal
- SOLAS reflective tape installed vertically and horizontally on sleeves for maximum visibility
- Warm neck collar
- Cuff exhaust valve with protective fabric backing
- Rapid self-donning entry combined with external crotch strap
- 1000 denier Cordura® buttocks overlay for rear abrasion resistance
- Waterproof Cordura® Sock and RockBoots
- XL aramid fiber knee pads and buttocks pad
- Relief zipper
- Pockets optional
- Internal waist adjustment cord
- Drysuit bag and ZipStick™
- Custom configurations available on request

WARRANTY

- Seven years for defects in materials and workmanship
- One year for the zipper, valves, and boots
- 90 days for the seals

AVAILABLE SELECT SIZES OR CUSTOM SIGNATURE

- Men's: 15 Select Sizes or Custom Signature



DUI MILITARY



AIR FORCE PARARESCUE

TLS™

This suit was designed for inland and water based civilian Search and Rescue where high visibility is required.

Waterproof, lightweight and swimmable nylon trilaminate in high-visibility international orange and yellow. SOLAS reflective tape is installed vertically and horizontally on sleeves for maximum visibility.

A double layer of material on shoulders and legs with drainage openings provides additional durability.

- Latex ZipSeals™ neck & wrist seal
- Additional layer of material on shoulder, knees, and buttocks for abrasion and wear resistance
- Aramid fiber knee pads and buttocks pad
- Self-donning main entry zipper and horizontal relief zipper
- 2 large DUI Cargo pockets
- Relief zipper
- Waterproof Drysuit Sock and choice of RockBoots or TurboBoots
- Drysuit bag and ZipStick™z
- Custom configurations available on request

WARRANTY

- Seven years for defects in materials and workmanship
- One year for the zipper, valves, and boots
- 90 days for the seals

AVAILABLE SELECT SIZES OR CUSTOM SIGNATURE

- Men's: 15 Select Sizes or Custom Signature





WATERPROOF BAGS

DUI waterproof bags are designed for maximum field performance. Simple to use and incredibly durable, these bags are **made with the same materials and manufacturing methods as the drysuits that DUI builds for divers and are used in the world's most hazardous environments.** For more than twenty five years, DUI has been designing bags to protect radios, weapons, motors and most any other equipment that absolutely must stay dry. Field operators can depend on DUI to provide their equipment with protection when their very lives could depend upon it. DUI can modify and customize bags upon request.

RUCKSACK LINER



COMM / UTILITY LINER



SNIPER WEAPONS BAG

Available in a range of sizes



SCOUT SWIMMER ASSAULT PACK

Available in larger sizes

PSC-5 RADIO BAG



SHOOT THROUGH BAG WITH ZIP REPLACEABLE END

DUI updated its classic, proven Shoot Through Bag and incorporated its patented ZipSeals™ technology to enhance performance. **The muzzle end features a ZipRing™ with a neoprene cap for fast and easy replacement if shot through.** The bag is available in both right and left handed versions.

- Heavy-duty nylon trilaminate material YKK waterproof zippers
- Liquid seam sealing technology
- M-4 compatible
- Zip replacement muzzle end integrated internal 5 finger zip
- 3-dimensional neoprene catcher for expended cartridges
- Shoulder sling compression strap
- Oral inflator
- Right or left handed

DIMENSIONS

- Length 35" x Width 3" x Height 14" (Highest Point)

COLORS

- Olive Drab or Black



GO BAG

Small and compact, the Go Bag was created with several specifically designed internal attachment points to organize and hold mission-essential items that need environmental protection.

- Rugged polyester trilaminate material
- YKK waterproof zippers
- Liquid seam sealing technology
- Fold over, double stitched seam
- Adjustable pistol holster
- Magazine holder
- NVG attachment point
- Water bottle holder
- Sea dye marker
- Four 3/8" lanyard attachment D-rings
- Additional elastic retaining straps
- Leg strap attachment point
- MOLLE attachment
- Oral inflator

DIMENSIONS

- Length 7" x Width 4" x Height 10"



DUI MILITARY



LARGE DUFFEL

Designed for general purpose use, this bag is made using the highest quality materials available. The fabric is heavy-duty nylon trilaminate material making it extra rugged and durable. The waterproof zipper is from YKK and all seams are multi-coated ensuring a long, waterproof life. There is a double layer of trilaminate material on the bottom of the bag for additional strength and reinforcement. Two adjustable tension straps allow for varying capacities and the carrying handles allow for easy transport. The oral inflator provides the operator with buoyancy control.

MATERIAL

- Heavy-duty nylon trilaminate

DIMENSIONS

- Length 39" x Width 12" x Depth 12"

COLORS

- Black or Olive Drab



GAS MASK / OPTICS BAG

This bag provides a convenient storage for a variety of equipment including NVG's, cameras, binoculars, etc., hence the name of the bag. An oral inflator allows for buoyancy control. Attached web loops make for fast attachment with ALICE clips to web gear.

MATERIAL

- Heavy-duty nylon trilaminate

DIMENSIONS

- 11.5" x 9.5" x 4.25"
- 10" x 7.25" x 4.25"





ESCAPE AND RECOVERY BACKPACK

This backpack is designed to remain completely submerged for multiple days containing the full contents of an Escape and Recovery Kit. Two separate but attached waterproof compartments allow individual access to each compartment without compromising the waterproof integrity of the other.

- Heavy-duty nylon trilaminate material YKK waterproof zippers
- Liquid seam sealing technology
- 2,380 cubic inches / 39 liters
- Two attached yet separate dry compartments:
- Smaller outer compartment for radio and GPS
- Larger main compartment for other E and R kit items
- Weight pocket with quick release system
- Single carry handle on top of bag
- Dual compression straps
- Adjustable backpack straps, chest strap with wind-ups, and stainless steel D-Rings on shoulder straps
- Oral Inflator in both compartments MOLLE attachments

DIMENSIONS

- Length 14" x Width 10" x Height 17"

COLORS

- Olive Drab or Black

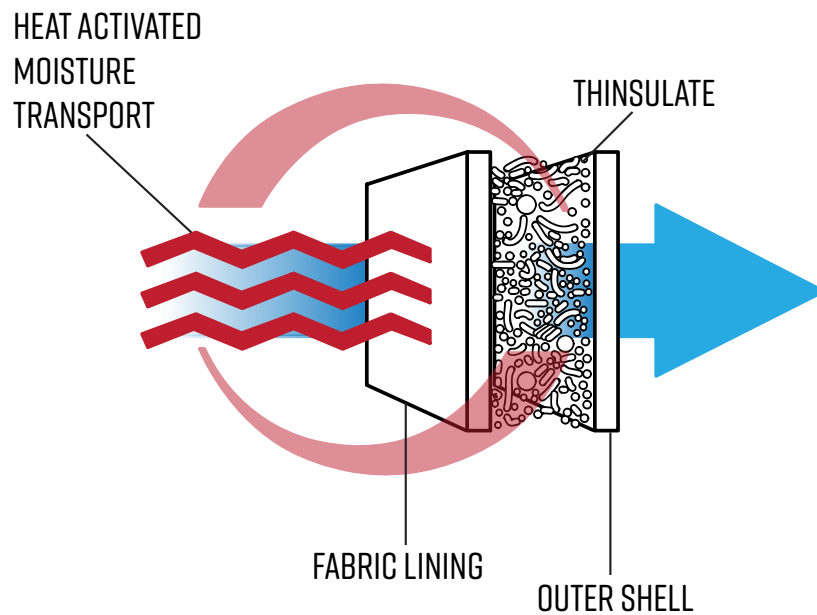




DIVEWEAR

Made from proven base materials of 3M Thinsulate, DuoTherm fleece and ECO Polartec® recycled materials, maximizing thermal protection while economizing weight and bulk. DUI Divewear comes in numerous options for thickness, sizing, and modularity. Divers may opt for jumpsuits in standard or custom sizing, or separate pants, pullovers and vests. The insulation is available for protection in waters ranging in temperatures from 28-88°F.

3M™ - THINSULATE INSULATION



HOW IT WORKS

Body warmth wicks moisture through the material lining a layer of Thinsulate insulation. Thinsulate provides bacterial protection and superior thermal retention.

Thinsulate is hydrophobic retaining about 80% of its insulation even when wet.





XM250

- Recommended for 50-65°F, a great choice for a wide range of colder water temps
- Made with Thinsulate™ Ultra Insulation (200 gm) which provides the greatest amount of warmth per unit of thickness available
- DuoTherm (560 gm/m²) panels in arms, waist, legs, and wrist for maximum stretch, warmth, and comfort
- Fleece lining for warmth and comfort
- Antimicrobial liner
- Two-way torso zipper
- Two zippered hip pockets
- Zippered chest pocket
- Stand-up collar for extra warmth
- 2" stirrups and thumb loops
- Includes DUI divewear tote bag

SIZES MEN'S

- XS - XXL

XM450

- Recommended for 28-45°F great choice for a wide range of colder water temps
- Made with Thinsulate™ Ultra Insulation (400 gm) which provides the greatest amount of warmth per unit of thickness available
- DuoTherm (560 gm/m²) panels in arms, waist, legs, and wrist for maximum stretch, warmth, and comfort
- Fleece lining for warmth and comfort
- Antimicrobial liner
- Two-way torso zipper
- Two zippered hip pockets
- Zippered chest pocket
- Stand-up collar for extra warmth
- 2" stirrups and thumb loops
- Includes DUI divewear tote bag

SIZES MEN'S

- XS - 4XL



DUOTHERM 150

Our DuoTherm™ Pro Divewear is constructed with all-way stretch fleece and accent stitching. Delivers warmth, comfort, and great styling. Versatile for layering and other outdoor activities.

- One-piece design avoids any possible gap between upper and lower garments
- Hand warmer pockets
- Recommended for 65°F and up. **Great choice for warmer waters!**
- Heavy stretch fleece (280 gm/m2) with pill-resistant, watershed outer jersey
- Two-way torso zipper
- Stand-up collar for extra warmth
- Thumb loops reduce unwanted sleeve movement during donning
- Elastic stirrups keep the jumpsuit in place

SIZES MEN'S

- XS - XXL

XM450 SOCKS

- Available in Sizes
- Sizes XS - XXL
- Fleece lining for warmth and comfort
- 1000 denier Cordura® bottom for durability
- Antimicrobial liner



DIVEWEAR

DUOTHERM 300

- Recommended for 45-65°F. **Great choice for colder waters!**
- Heavy Stretch Fleece (560 gm/m2) with pill-resistant, watershed outer jersey

JUMPSUIT 300

- One-piece design avoids any possible gap between upper and lower garments
- Two-way torso zipper
- Hand warmer pockets
- Chest pocket
- Stand-up collar for extra warmth
- Thumb loops reduce unwanted sleeve movement during donning
- Elastic stirrups keep the jumpsuit in place

SIZES MEN'S

- XS - XXL or Custom

SIZES WOMEN'S

- XS - XXL or Custom



PULLOVER 300

- Zippered hand warmer pockets
- Thumb loops reduce unwanted sleeve movement during donning

SIZES MEN'S

- XS - XXL



DIVEWEAR

PANTS 300

- Drawstring waist tie
- Elastic Stirrups

SIZES MEN'S

- XS - XXL

VEST 300

- Excellent for layering
- Adds 5° of extra insulation
- Hand warmer pockets

SIZES MEN'S

- XS - XXL



SOCKS 300

SIZES MEN'S

- XS - XXL



HOOD 300

- 560 gm Double-layer Fleece
- Adds 5°F (2.8°C) Warmth
- One Size Fits Most



ECO POLARTEC® DIVEWEAR

Made with 75% recycled materials.

It makes the perfect base layer for any drysuit system and is excellent for other outdoor activities too.

- Designed to be worn as a base layer under your primary divewear or can be worn alone in tropical climates.
- Highly breathable, dries quickly, SPF protection.
- Made with USA made Polartec® PowerDry.
- Fashionable fuchsia (Women's) and Silver (Men's) accent stitching.
- Available as pullover or pants

MEN'S SIZES

- S - XXL

WOMEN'S SIZES

- XS - XXL







COMMERCIAL SUIT

DUI's continued interest in pushing the limits of cold water diving led to the challenge of improving offshore saturation diving for both military and commercial diving. In the late 1960's, divers could only spend fifteen minutes working in 40° water while breathing helium mixtures before becoming operationally incapacitated and unable to perform useful work.

This challenge led to DUI inventing and patenting the first Heated Underwater Diving Suit with supporting Hot Water Systems. This was the first working free flooding hot water suit with a support system that revolutionized saturation diving. It extended the brief duration cold water dive to an eight hour capability. Today, this remains the standard for offshore deep water diving in cold conditions.

Of note in 1968, the US Navy set the record for the first open water dive of 1,010 fsw on the Elk River IX-501 using the Mk-2 Deep Diving System with DUI providing the thermal protection with its Hot Water Suit and Heating System.

These early efforts helped establish DUI as a world leader of applied thermal physiology in the workplace environment, both military and commercial. This legacy has continued with DUI's unrelenting commitment to improving the diver's performance and safety in these harsh environments.

COMMERCIAL SUIT

“WE DO OUR BEST TO
GET YOU IN HOT WATER”



DW HOT WATER SUIT

Designed to increase productivity and protection has a two-zone water flow system that first flows through the legs while the diver is inside the bell then flows through the rest of the suit when the diver enters the water. Allows the heat to be better regulated without the need to constantly adjust temperature. Attached (optional) is a full body harness by Atlantic which is made up of epaulets and loops placed close to the divers body to allow the diver more freedom.

- Our new manifold has a 360° swivel
- Our new manifold is easy to repair and maintain
- Aramid fiber knee, butt, and elbow pads
- Pile patch for divers patch
- Fitted with boot gaiters to reduce debris from entering the divers boots
- Knee lift D rings for safety and rescue
- 2 large Cargo pockets with rubberized interior and attached 2" D-Ring
- Reflective tape on the arms
- Mask defogging tube
- Additional tube for the head when wearing a mask
- Made with crushed neoprene which is more durable and prevents shrinkage
- Internal suspenders



DURABILITY 9

FLEXIBILITY 7



MILITARY DIVER HOT WATER SUIT

Designed to increase productivity and protection has a two-zone water flow system that first flows through the legs while the diver is inside the bell then flows through the rest of the suit when the diver enters the water. Allows the heat to be better regulated without the need to constantly adjust temperature.

- Our new manifold has a 360° swivel
- Our new manifold is easy to repair and maintain
- Aramid fiber knee pads and elbow pads
- Pile patch for divers patch
- Wrist straps restrict water from leaving suit and ease for divers to modify when needed
- Fitted with boot gaiters to reduce debris from entering the divers boots
- Knee lift D rings for safety and rescue
- 2 large Cargo pockets with rubberized interior and attached 2" D-Ring
- Reflective tape on the arms
- Mask defogging tube
- Additional tube for the head when wearing a mask
- Made with crushed neoprene which is more durable and prevents shrinkage
- Internal suspenders



COMMERCIAL SUIT

DURABILITY 9

FLEXIBILITY 7



INDUSTRIAL DIVER HOT WATER SUIT 2.0

DUI Hot Water Systems made extended diving possible in the North Sea. The DUI hot water suit remains the standard for commercial diving operations around the world.


Keeping working divers warm since the early 70's. Our hot water suits have made it possible for commercial divers to get their job done. By pumping hot water down to the diver and allowing it to circulate inside the suit, working divers can get more done underwater without the added stress of getting cold.

Made in San Diego, CA with the highest-grade materials the DUI hot water suits are built to last and live up to the harshest of underwater environments. Different styles of boots and gloves are available to meet the needs of today's commercial diver.



COMMERCIAL SUIT

NOW SHIPPING WITH OUR NEW 2-ZONE MANIFOLD



- Our new manifold has a 360° swivel
- It is easy to repair and maintain

DURABILITY 9
FLEXIBILITY 7



HOT WATER ACCESSORIES



HOT WATER BOOTS SOFT-SOLE

- Available in sizes
- S - XL

HOT WATER GLOVES

- Available in sizes
- S - XL



HOT WATER BOOTS HARD-SOLE

- Available in sizes
- S - XL



SIZING

WOMEN'S SELECT SERIES DRY SUIT SIZE	SS	S	ST	MS	M	MT	MLS	ML	MLT	LS	L	LT	XLS	XL	XLIT	XXLS	XXL	XXLT
HEIGHT	60	62	64	62	64	66	64	66	68	66	68	70	68	70	72	70	72	74
CHEST	31-32	31-32	31-32	33-34	33-34	33-34	35-36	35-36	35-36	37-38	37-38	37-38	39-40	39-40	39-40	41-42	41-42	41-42
WAIST	29-30	29-30	29-30	31-32	31-32	31-32	33-34	33-34	33-34	35-36	35-36	35-36	37-38	37-38	37-38	39-40	39-40	39-40
HIPS	33-34	33-34	33-34	35-36	35-36	35-36	37-38	37-38	37-38	39-40	39-40	39-40	41-42	41-42	41-42	43-44	43-44	43-44
SPINE TO WRIST	25-26	26-27	27-28	26-27	27-28	28-29	27-28	28-29	29-30	28-29	29-30	30-31	29-30	29-30	31-32	30-31	31-32	32-33
FLOOR TO CROTCH	30-31	31-32	32-33	31-32	32-33	33-34	32-33	33-34	34-35	33-34	34-35	35-36	34-35	35-36	36-37	35-36	36-37	37-38

MEN'S SELECT SERIES DRY SUIT SIZE	SS	S	ST	MS	M	MT	LS	L	LT	XLS	XL	XLIT	XXLS	XXL	XXLT
HEIGHT	64	66	68	66	68	70	68	70	72	70	72	74	72	74	76
CHEST	35-37	35-37	35-37	38-40	38-40	38-40	41-43	41-43	41-43	44-46	44-46	44-46	47-49	47-49	47-49
WAIST	33-35	33-35	33-35	36-38	36-38	36-38	39-41	39-41	39-41	42-44	42-44	42-44	45-47	45-47	45-47
HIPS	32-34	32-34	32-34	35-37	35-37	35-37	38-40	38-40	38-40	41-43	41-43	41-43	44-46	44-46	44-46
SPINE TO WRIST	27-28	28-29	29-30	28-29	29-30	30-31	29-30	30-31	31-32	30-31	31-32	32-33	31-32	32-33	33-34
FLOOR TO CROTCH	32-33	33-34	34-35	33-34	34-35	35-36	34-35	35-36	36-37	35-36	36-37	37-38	36-37	37-38	38-39

DUI HOT WATER SUIT	SS	S	ST	MS	M	MT	LS	L	LT	XL	XLIT	XXL	XXLT	3XS	3X	3XT
HEIGHT	62	64	66	64	66	68	66	68	70	70	72	72	74	72	74	76
CHEST	37	37	37	40	40	40	43	43	43	45	45	48	48	51	51	51
WAIST	31	31	31	34	34	34	34	34	34	37	37	40	40	43	43	43
HIPS	39	39	39	42	42	42	45	45	45	48	48	51	51	54	54	54
FLOOR TO CROTCH	31	32	33	32	33	34	33	34	35	35	36	36	37	36	37	38

DUI DRY GLOVE	S*	M	L	XL
PALM CIRCUMFERENCE	6-7	7-8.5	8.5-10	10-11

The sizing table assumes only one liner is worn. If two liners are worn, move up one size. To find your glove size in inches, measure around the largest part of the hand over the knuckles while making a fist, excluding the thumb.

*Small is only available in Maximum-Dexterity

UNISEX XM450™ JUMPSUITS	XS	S	M	MT	L	LT	XL	XLIT	XXL	3XL	4XL
HEIGHT	64	66	68	70	70	72	72	74	74	74	74
CHEST	32-34	35-37	38-40	38-40	41-43	41-43	44-46	44-46	47-49	50-52	53-55
WAIST	30-31	33-35	36-38	36-38	39-41	39-41	42-44	42-44	45-47	48-50	51-53
HIPS	29-31	32-34	35-37	35-37	38-40	38-40	41-43	41-43	44-46	47-49	50-52
SPINE TO WRIST	27-28	28-29	29-30	30-31	30-31	31-32	31-32	32-33	32-33	32-33	32-33
FLOOR TO CROTCH	32-33	33-34	34-35	35-36	35-36	36-37	36-37	37-38	37-38	37-38	37-38

SIZING

UNISEX XM250™ JUMPSUITS, DUOTHERM™ (PULLOVER, PANTS, & VEST)	XS	S	M	L	XL	XXL
HEIGHT	64	66	68	70	72	74
CHEST	32-34	35-37	38-40	41-43	44-46	47-49
WAIST	30-31	33-35	36-38	39-41	42-44	45-47
HIPS	29-31	32-34	35-37	38-40	41-43	44-46
SPINE TO WRIST	27-28	28-29	29-30	30-31	31-32	32-33
FLOOR TO CROTCH	32-33	33-34	34-35	35-36	36-37	37-38

MEN'S DUOTHERM™ JUMPSUITS, ECO DIVEWEAR™	XS	S	M	L	XL	XXL
HEIGHT	64	66	68	70	72	74
CHEST	32-34	35-37	38-40	41-43	44-46	47-49
WAIST	30-31	33-35	36-38	39-41	42-44	45-47
HIPS	29-31	32-34	35-37	38-40	41-43	44-46
SPINE TO WRIST	27-28	28-29	29-30	30-31	31-32	32-33
FLOOR TO CROTCH	32-33	33-34	34-35	35-36	36-37	37-38

WOMEN'S DUOTHERM™ JUMPSUITS	S	M	ML	L	XL	XXL
HEIGHT	62	64	66	68	70	72
CHEST	31-32	33-34	35-36	37-38	39-40	41-42
WAIST	29-30	31-32	33-34	35-36	37-38	39-40
HIPS	33-34	35-36	37-38	39-40	41-42	43-44
SPINE TO WRIST	26-27	27-28	28-29	29-30	30-31	31-32
FLOOR TO CROTCH	31-32	32-33	33-34	34-35	35-36	36-37

WOMEN'S ECO DIVEWEAR™ PULLOVER AND PANTS	S	M	L	XL	XXL
HEIGHT	62	64	68	70	72
CHEST	31-32	33-34	35-38	39-40	41-42
WAIST	29-30	31-32	33-36	37-38	39-40
HIPS	33-34	35-36	37-40	41-42	43-44
SPINE TO WRIST	26-27	27-28	28-30	30-31	31-32
FLOOR TO CROTCH	31-32	32-33	33-35	35-36	36-37

DUI ULTRA DRYSUIT HOOD	XS	S	M	L	XL	XXL
HEAD	21	22	23	24	25	26
NECK	13	14	15	16	17	20

DUI WEIGHT & TRIM™	S	M	L
HEIGHT	60-64	64-70	70-78

US MEN'S	US WOMEN'S	UK	EUROPE	ROCKBOOT™	TURBOBOOTS™ / SOCK	ULTRAFLEX™ BOOT	DUOTHERM™ DIVEWEAR	THINSULATE DIVEWEAR
4	5.5	3	36	4	XS (8 3/4")	XS	XS	XS
4.5	6	3.5		5	S (9 1/2")	XS	XS	XS
5	6.5	4	37	5	S (9 1/2")	S	S	XS
5.5	7	4.5		6	S (9 1/2")	S	S	XS
6	7.5	5	38	6	M (10")	S	S	S
6.5	8	5.5		7	M (10")	M	S	S
7	8.5	6	39	7	M (10")	M	M	S
7.5	9	6.5		8	ML (10 1/2")	M	M	M
8	9.5	7	40-41	8	ML (10 1/2")	L	M	M
8.5	10	7.5		9	ML (10 1/2")	L	M	M
9	10.5	8	42	9	L (10 7/8")	L	L	M
9.5	11	8.5		10	L (10 7/8")	XL	L	L
10	11.5	9	43	10	L (10 7/8")	XL	L	L
10.5	12	9.5		11	XL (11 1/2")	XL	L	L
11	12.5	10	44	11	XL (11 1/2")	XXL	XL	L
11.5		10.5		12	XL (11 1/2")	XXL	XL	XL
12		11	45-46	12	XXL (12")	3XL	XL	XL
12.5		11.5		13	XXL (12")	3XL	XL	XL
13		12	47	13	3XL (12 1/2")	4XL	XXL	XXL
13.5		12.5		14	3XL (12 1/2")	4XL	XXL	XXL
14		13	48	14	3XL (12 1/2")		XXL	XXL

THE FOLLOWING MEASUREMENTS SHOULD BE TAKEN ON THE PERSON'S FRONT:

1. HEAD

Above the eyebrows straight around head. This measurement helps to determine hood size.

2. NECK

Around neck at widest point. Make sure hair is not under the measuring tape (if person is in street clothes make sure collar of shirt is not under measuring tape). This measurement helps to determine hood size and neoprene neck seal size, if applicable.

3. WRIST

Across wrist bone (make sure hand is relaxed). This measurement helps to determine neoprene wrist seal size, if applicable.

4. FOREARM

Widest point below elbow (arm relaxed).

5. BICEPS

Widest point on the upper arm (arm relaxed). If the person is muscular, have them flex their muscle while this measurement is taken.

6. ARMHOLE

With arm straight out to the side and parallel to the ground, wrap the measuring tape around the arm where it joins to the body. Start and end at the top. Have the person drop their arm to the side and then read the measurement.

7. CHEST

Take this at the widest point. This is usually at the nipple area. (Do not let the person hold their breath during this measurement. They should be relaxed.) If the person is muscular, take a second measurement at armpit area, across the upper chest. Use the larger of the two measurements. Remember, take this measurement at the widest area.

8. WAIST

At the widest point. (This is usually across the navel. However, make sure that it is the widest point! Again, make sure the person is relaxed and not holding their breath or "holding it in.")

9. HIPS

Take this measurement from the side of the person so you can see the placement of the tape. Place the tape around the hips across the widest point of the buttocks. (Make sure they empty their pockets if in street clothes.)

10. THIGH

At the widest point.

11. CALF

At the widest point.

12. KNEE TO FLOOR

Place tape on side of leg parallel to center of knee and stretch it straight down to floor. If person is in street clothes have them bend their knee slightly so you can find the center.

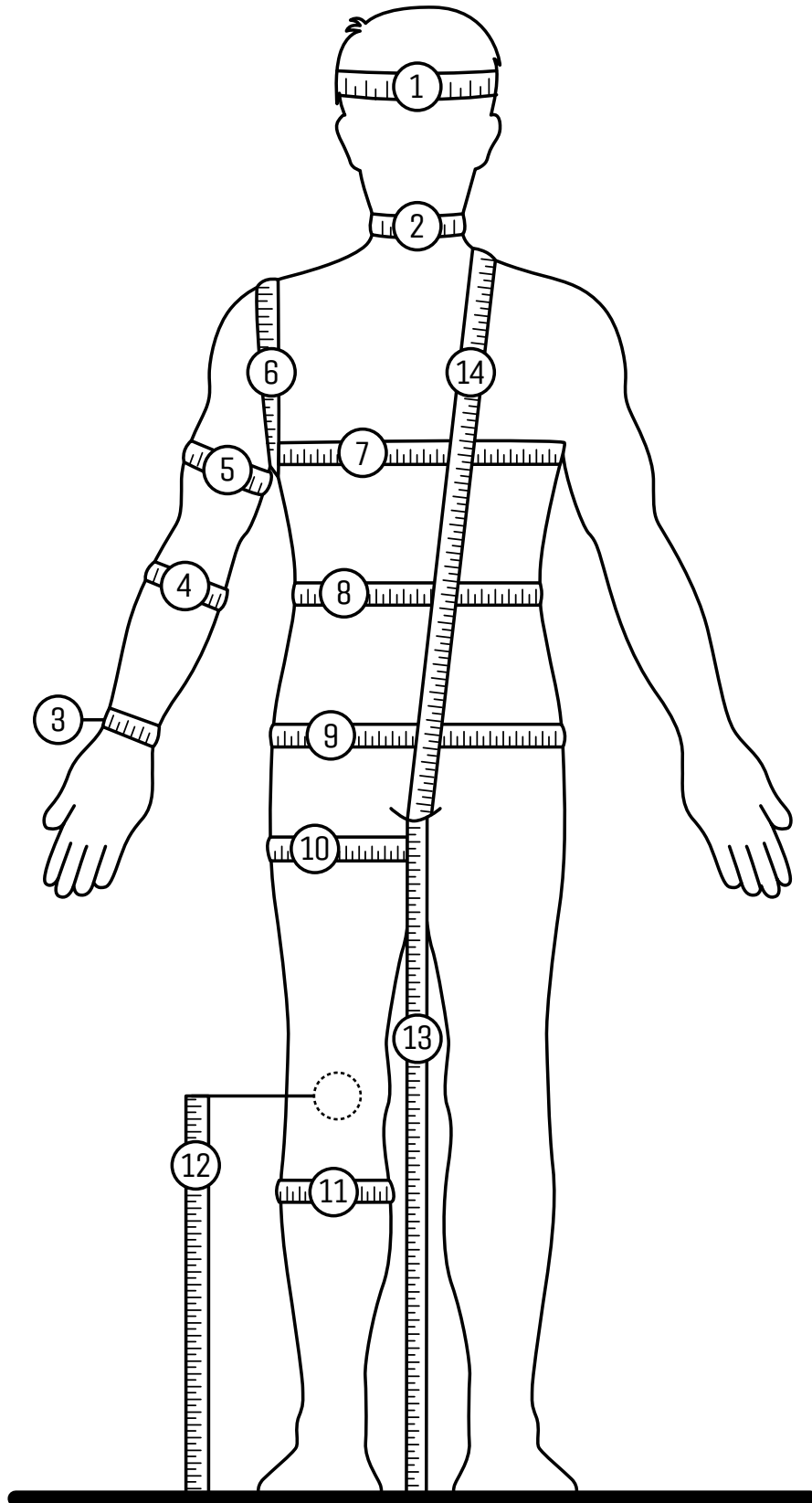
13. CROTCH TO FLOOR

Have the person stand with their feet approximately 12" apart and hold their hand out palm up. Place the end of the tape between their first two fingers. Have them place the hand with the tape in their crotch area snug up against the body. You then stretch the tape straight down to the floor. Make sure the person is standing up straight and not looking down at you as this will shorten the measurement.

14. GIRTH

This measurement is for the entire torso length. Start at the top of the shoulder at the base of the neck. Take tape down the front of the person through crotch area and up the back to the same point on the shoulder where you started (shoulder, crotch, shoulder).

DIVER'S FRONT



SIZING

THE FOLLOWING MEASUREMENTS SHOULD BE TAKEN ON THE PERSON'S BACK:

15. SHOULDER TO FLOOR

Place tape on shoulder next to neck and stretch it down to the floor.

16. SHOULDER WIDTH

Across the top of the shoulder starting on the curve of the left side where the arm joins the top of the shoulder to the base of the neck and over to the same point on the right shoulder. These points are approximately 2" below the top edge of the shoulder (follow the curve of the start and stop points with the tape measure).

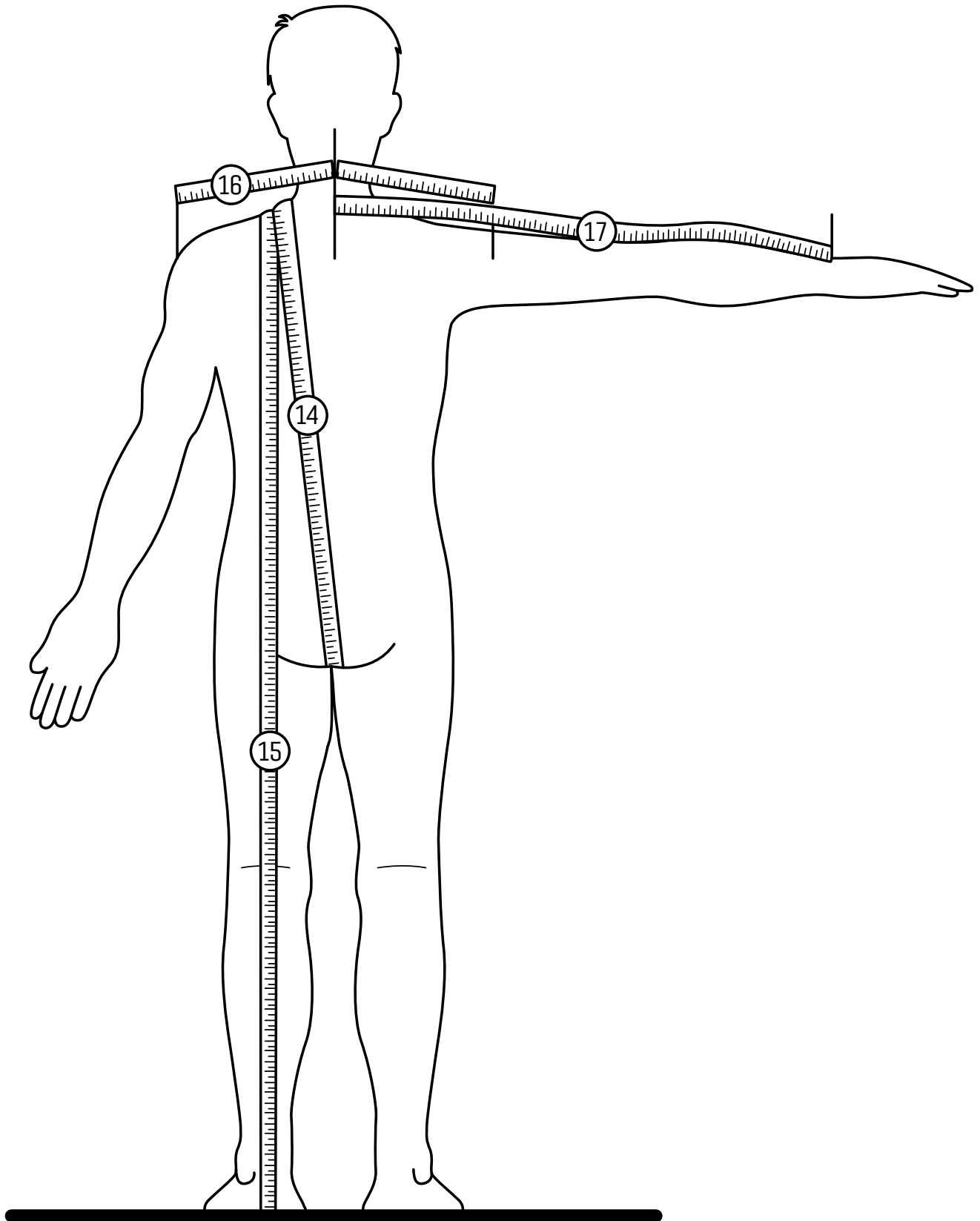
17. SPINE TO WRIST

Have person hold arm out parallel to the ground to the side. Place the end of the tape at the base of the neck and run it along the arm to the wrist bone.

TIPS

- **Do NOT measure yourself!** Measuring should be done by a properly trained DUI dealer.
- The person being measured should be relaxed, looking forward and standing up straight with their feet approximately 12" apart.
- Measurements should be taken in street clothes and barefoot.
- Use a cloth measuring tape.
- **Do NOT make allowances for divewear.** DUI will allow enough room for the diver's insulation based on the information provided on the measurement form.
- During measuring, the person being measured should not move around, look down at the ground or at the person doing the measuring.
- All circumference measurements should be taken at the widest point.
- Refer to the drawing for placement of measuring tape.
- **VERY IMPORTANT!** You must specify the heaviest type of insulation you will be wearing with your DUI drysuit on the measurement form:
 - Maximum DuoTherm™ Pro 300 or less
 - Xm450 with thin liner
 - Considerably more than Xm450 - Please describe
- DUI will design a drysuit based on the measurements and information provided. DUI is not responsible for the fit of a drysuit if provided with incorrect measurements or incomplete information.

DIVER'S BACK



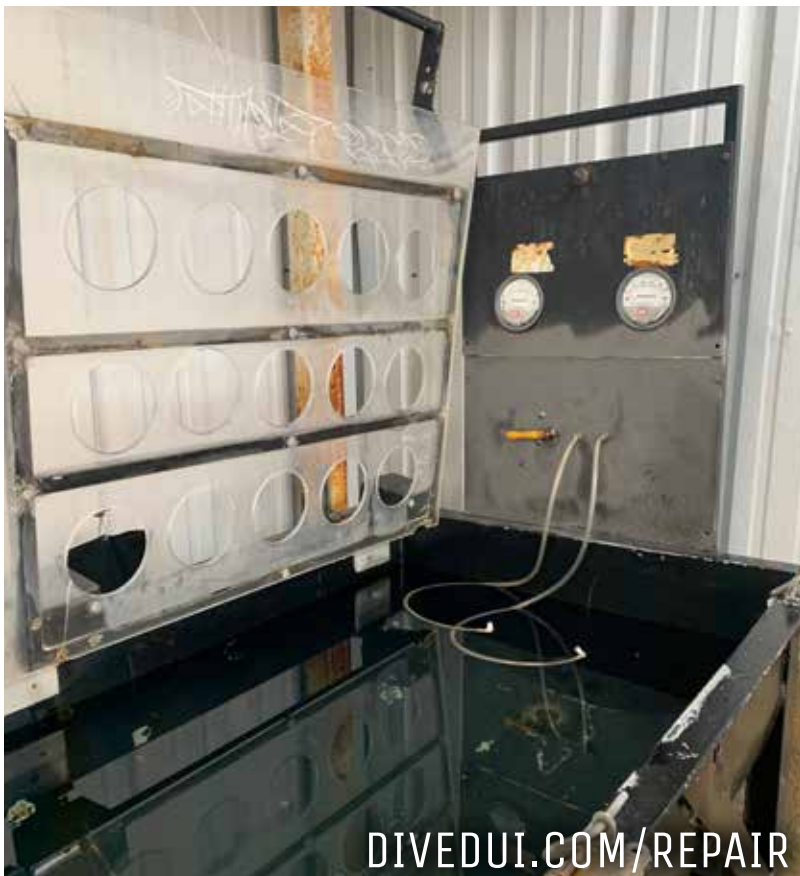
SIZING

REPAIR

Our highly experienced service technicians are passionate about the care your drysuit receives because they know you depend on your equipment to perform in demanding environments. We service drysuits for sport, technical, public safety, commercial, and military markets. Did you know that we will even repair suits made by other manufacturers?



20-POINT DRYSUIT INSPECTION



Your drysuit will be given a 20-Point Drysuit Inspection including an in-water leak test. Throughout this process, information and results are entered and tracked by DUI's proprietary software system, SaM™ (Service and Maintenance). SaM™ tracks life and service history of DUI drysuits and the service history of non-DUI drysuits sent to our factory for service.

All suits receiving the DUI Drysuit Service will also receive an in-water leak test after completion of the work, to ensure the water tight integrity of all repairs.

Upon completion of the 20-Point Drysuit Inspection and in-water leak test, DUI's Service Team will email the results to you using the contact information you provided on the DUI Repair Service Order Form. This email will include an itemized list of all recommended work and the cost of each repair. You can approve all or any recommended work to be done. This email will also include the estimated time for completion.

WARRANTY

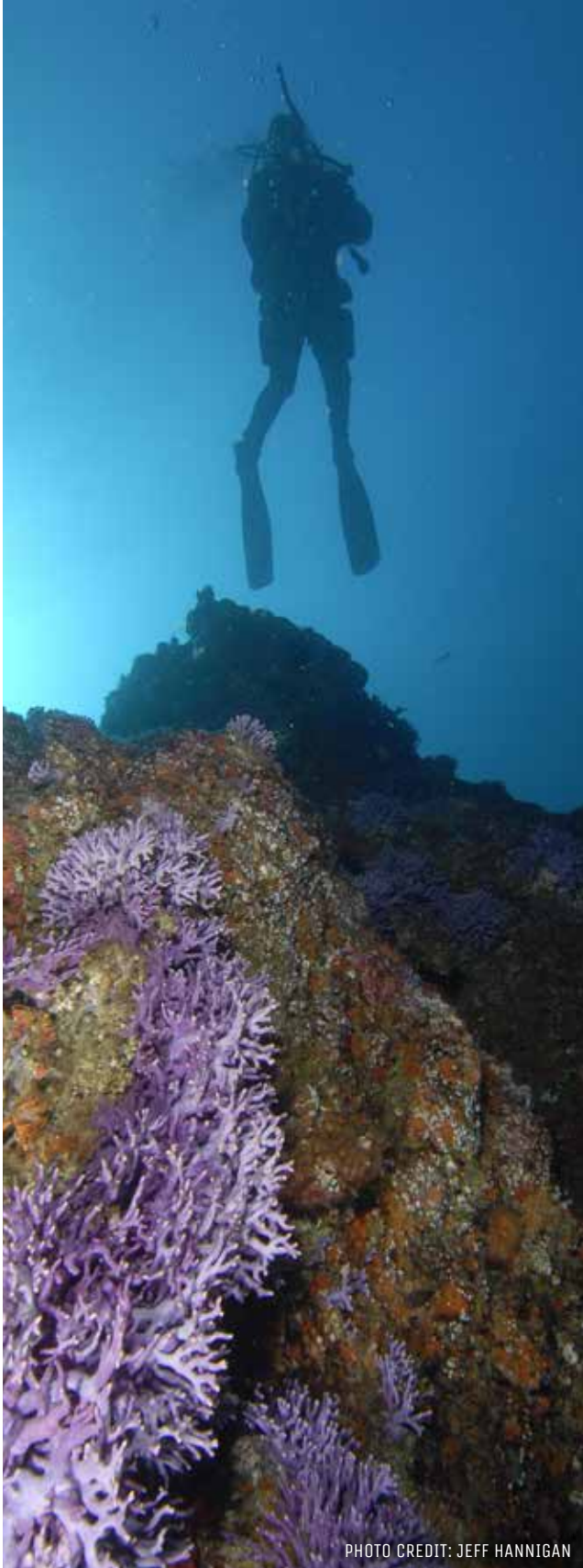


PHOTO CREDIT: JEFF HANNIGAN

Your new DUI drysuit is automatically registered for the warranty stated below. You do not need to complete the online form or mail in the registration card. Please be advised the "Dog Tags" (luggage tags) are no longer distributed.

Diving Unlimited International, Inc. (DUI) warrants that your DUI Premium drysuit (except for the neck seal, wrist seals, zipper and valves) will be free from defects in materials and workmanship for a period of seven (7) years from the date of original retail purchase.

DUI warrants that the Standard drysuits: Yukon II, Cortez, Coronado and CXO100 will be free from defects in materials and workmanship for a period of (3) years from the date of original retail purchase.

DUI warrants that the zipper, the exhaust valves, the inlet valve and crotch strap will be free from defects in materials and workmanship for a period of one (1) year from the date of original retail purchase.

DUI warrants that the neck and wrist seals will be free from defects in material and workmanship for a period of ninety (90) days from the date of original retail purchase.

DUI warrants that the Weight & Trim Systems, Divewear, RockBoots, Hoods, Dry Glove Systems and other accessories will be free from defects in materials and workmanship for a period of one (1) year from the date of original retail purchase with proof of purchase.

Any product determined by DUI to be defective in materials or workmanship in accordance with the above warranties will be repaired or replaced at the option of DUI, free of charge, when received at the factory freight prepaid, together with proof of purchase. The warranty is not extended with the repair or replacement of the item.

This warranty is expressly in lieu of all other warranties. Any implied warranties of merchantability or fitness for a particular purpose are limited to the same duration as this express warranty.

This warranty does not cover, and DUI shall not be liable for incidental or consequential damages. Some states do not allow the exclusion or limitation of implied warranties, incidental or consequential damages, so the above limitations and exclusions may not apply to you.

This warranty does not cover wear from normal use.

This warranty does not cover fading or any damage resulting from misuse, abuse, neglect, alteration, failure to perform maintenance as instructed, damage caused by contaminants, or unauthorized repair or service.

This warranty does not cover any representation or warranty made by dealers beyond the provisions of this warranty.

This warranty does not cover costs incurred for normal repair, inspection and preventative maintenance.

This warranty is a consumer warranty extended only to the original retail purchaser, and does not apply to drysuits or equipment used for commercial purposes and dive professionals including instructors, divemasters/dive leaders, underwater photographers, etc.

You must establish proof of purchase to obtain warranty service or replacement.

This warranty gives you specific legal rights, and you may also have other rights which vary from state to state.

SENDING IN YOUR DRYSUIT FOR SERVICE, CONTACT:

Diving Unlimited International, Inc.
1148 Delevan Drive
San Diego, CA 92102-2499 USA
800-325-8439 or 619-236-1203
Fax 619-237-0378
Support@divedui.com
www.divedui.com

DIVEDUI.COM/WARRANTY

2020

DIVEDUI.COM

 @DUI-DIVING UNLIMITED INTERNATIONAL

#DIVEDUI

 @DIVEDUI

 @DUI_DIVER

DIVING UNLIMITED INTERNATIONAL
800-325-8439
1148 DELEVAN DRIVE
SAN DIEGO, CA 92102-2499 USA

550316